

FEATURES

- 23HP EFI GASOLINE ENGINE.
- STRATEGICALLY PRICED.
- WIRELESS 10 BUTTON REMOTE CONTROL.
- 360° NOZZLE ROTATION w\Auto Positioning.
- COMPACT LIGHTWEIGHT DESIGN.

CYCLONE **KB23**

DEBRIS BLOWER



SPEC

TYPE	Tow Behind
DEBRIS TYPE	Dust, Grass, Leaves, Sand
ACREAGE	4 to 6
INPUT POWER	23 HP EFI Gasoline Engine
START / STOP CONTROL	Wireless remote start / stop
THROTTLE CONTROL	Wireless remote
NOZZLE	Aerospace Polymer Nozzle
NOZZLE OUTLET SIZE	Approx. 12 in
NOZZLE CONTROL	360 degree, auto position without power loss.
REMOTE	Hand held, 10 function push button, water resistant
FUEL CAPACITY	6 gal
BATTERY	12 volt, 300 cold cranking amps
TRAILER	Bolt-on trailer package with adjustable hitch to match many different tow vehicles.
TIRES	18x8.50-8
MOUNTING	Skid mount or tow behind trailer
OVERALL LENGTH W/ NOZZLE	112 in
FRAME WIDTH W/ WHEELS	48 in
HEIGHT	39 in
SKID MOUNT - FRAME LENGTH	48in with hitch removed.
SKID MOUNT - OVERALL LENGTH W/ NOZZLE	75in with hitch removed.
SKID MOUNT - FRAME WIDTH	28 in
WEIGHT	427 lbs (193 kg)
SHIPPING WEIGHT	505 lbs (229 kg)
SHIPPING BOX SIZE	53 in (135 cm) x 37 in (94 cm) x 49 in (124 cm)
MACHINE WARRANTY	10 Year Manufacturer Warranty
ENGINE / MOTOR WARRANTY	3 Year Engine Manufacturer's Warranty
PROP 65	WARNING: Cancer and Reproductive Harm - www.P65Warnings.ca.gov



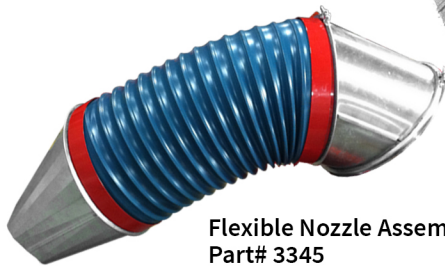
OPTIONS

180 Zoar Valley Road
Springville, NY 14141

NOZZLES +

ALUMINUM NOZZLES

Aerospace Polymer Nozzle - Part# 2851



Flexible Nozzle Assembly - Part# 3345
Various lengths available.
Ideal for rough terrain.

*Call sales and service
to request custom
nozzle configuration.



Optional aluminum nozzles **will not** connect to the standard Aerospace Polymer Nozzle (Part# 2851). Requires: **Two 45° elbow segments (Part# 1171)** and two additional clamp bands (Part# 1173).

12" Extension - Part# 1468
20" Extension - Part# 1845

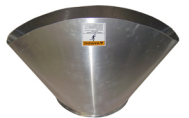
10" Round Nozzle - Part# 1417
12" Round Nozzle - Part# 1172
Improves air velocity with lower horsepower and hydraulic blower units



10" Rectangular Nozzle - Part# 1469
19" Rectangular Nozzle - Part# 1425
5.5"x15" opening - extra length/more concentrated air flow. Uses - heavy wet debris, plugs, top dressing. No ground clearance in the vertical down position.



Fishtail Nozzle - Part# 1743
5"x30" (wide angle) opening. Distributes a large volume of air at a lower velocity over a wide area. Easily converts blower into a "Greens Fan". Adaptable to all models. Not as effective at moving debris.



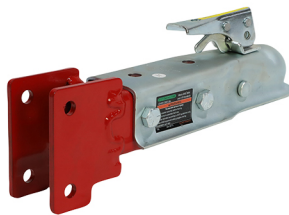
D.O.T. TRAILER

Part# 1613-D for 8000, KB4, EFI & Mega



2" BALL RECEIVER HITCH

Part# 4605



FORK POCKETS

Part# 4552
Great for moving blowers around jobsites and bed mount / skid mount applications.



GYRATORY ATOMIZING NOZZLE

Part# 2547
(Safety guard removed for clarity)



CORDED CONTROL

Part# 5579 for KB7, MEGA 3 Model
Part# 2787 for Diesel Model
Part #5580 for Squared Model



CLAMP BAND W/ BOLT & NUT

Part# 1173



QUICK CONNECT CLAMP BAND

Part# 4935
Quickly remove or add nozzle with the barrel style clamp band.



WARNING:
Cancer & Reproductive Harm -
www.P65Warnings.ca.gov