

# CYCLONE SQUARED

DEBRIS BLOWER



## FEATURES

- 40 HP EFI GASOLINE ENGINE.
- INDUSTRY FIRST DUAL TURBINE TOW-BEHIND DEBRIS BLOWER w/2x the air volume.
- WIRELESS 8 BUTTON REMOTE FOR START/STOP, THROTTLE & 360° NOZZLE ROTATION CONTROL.
- INDEPENDENT CONTROL OF EACH NOZZLE PROVIDING OPTIMUM BLOWING ANGLES.

## SPEC

TYPE	Tow Behind
DEBRIS TYPE	Aggregate, Dust, Grass, Leaves, Sand, Snow, Tree
ACREAGE	10+, 7 to 9
INPUT POWER	40 HP EFI Gasoline Engine
START / STOP CONTROL	Wireless remote start / stop
THROTTLE CONTROL	Wireless remote
NOZZLE	Aerospace Polymer Nozzle
NOZZLE OUTLET SIZE	Approx. 12 in x 2 nozzles
NOZZLE FUNCTION	Wireless remote
NOZZLE CONTROL	360 degree, auto position without power loss.
REMOTE	Hand held, 8 function push button, water resistant
FUEL CAPACITY	6 gal
BATTERY	12 volt, 350 cold cranking amps
TRAILER	Bolt-on trailer package with adjustable hitch to match many different tow vehicles.
TIRES	18x8.50-8
MOUNTING	Skid mount or tow behind trailer
OVERALL LENGTH W/ NOZZLE	112 in
FRAME WIDTH W/ WHEELS	66 in
HEIGHT	43 in
SKID MOUNT - FRAME LENGTH	48 in
SKID MOUNT - OVERALL LENGTH W/ NOZZLE	75 in
SKID MOUNT - FRAME WIDTH	48 in
WEIGHT	765 lbs (347 kg)
SHIPPING WEIGHT	844 lbs (383 kg)
SHIPPING BOX SIZE	68 in (173 cm) x 54 in (137 cm) x 46 in (117 cm)
MACHINE WARRANTY	10 Year Manufacturer Warranty
ENGINE / MOTOR WARRANTY	3 Year Engine Manufacturer's Warranty
PROP 65	WARNING: Cancer and Reproductive Harm - <a href="http://www.P65Warnings.ca.gov">www.P65Warnings.ca.gov</a>



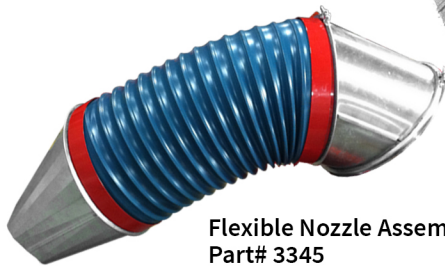
## OPTIONS

180 Zoar Valley Road  
Springville, NY 14141

### NOZZLES +

### ALUMINUM NOZZLES

Aerospace Polymer Nozzle - Part# 2851



**Flexible Nozzle Assembly - Part# 3345**  
Various lengths available.  
Ideal for rough terrain.

\*Call sales and service  
to request custom  
nozzle configuration.



Optional aluminum nozzles **will not** connect to the standard Aerospace Polymer Nozzle (Part# 2851). Requires: **Two 45° elbow segments (Part# 1171)** and two additional clamp bands (Part# 1173).

**12" Extension - Part# 1468**  
**20" Extension - Part# 1845**

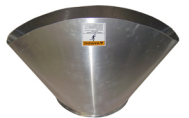
**10" Round Nozzle - Part# 1417**  
**12" Round Nozzle - Part# 1172**  
Improves air velocity with lower horsepower and hydraulic blower units



**10" Rectangular Nozzle - Part# 1469**  
**19" Rectangular Nozzle - Part# 1425**  
5.5"x15" opening - extra length/more concentrated air flow. Uses - heavy wet debris, plugs, top dressing. No ground clearance in the vertical down position.



**Fishtail Nozzle - Part# 1743**  
5"x30" (wide angle) opening. Distributes a large volume of air at a lower velocity over a wide area. Easily converts blower into a "Greens Fan". Adaptable to all models. Not as effective at moving debris.



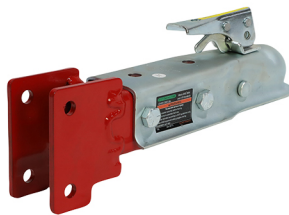
#### D.O.T. TRAILER

Part# 1613-D for 8000, KB4, EFI & Mega



#### 2" BALL RECEIVER HITCH

Part# 4605



#### FORK POCKETS

Part# 4552

Great for moving blowers around jobsites and bed mount / skid mount applications.



#### GYRATORY ATOMIZING NOZZLE

Part# 2547

(Safety guard removed for clarity)



#### CORDED CONTROL

Part# 5579 for KB7, MEGA 3 Model  
Part# 2787 for Diesel Model  
Part #5580 for Squared Model



#### CLAMP BAND W/ BOLT & NUT

Part# 1173



#### QUICK CONNECT CLAMP BAND

Part# 4935

Quickly remove or add nozzle with the barrel style clamp band.



**WARNING:**  
Cancer & Reproductive Harm -  
www.P65Warnings.ca.gov