

# CYCLONE 8000

## DEBRIS BLOWER

### FEATURES

- 14HP GASOLINE ENGINE.
- ENTRY LEVEL SELF CONTAINED TOW BEHIND
- CORDED NOZZLE CONTROL.
- 360° NOZZLE ROTATION.
- COMPACT LIGHTWEIGHT DESIGN.
- IDEAL FOR HOMEOWNERS AND RESIDENTIAL LANDSCAPERS.



### SPEC

TYPE	Tow Behind
DEBRIS TYPE	Dust, Grass, Leaves, Sand
ACREAGE	1 to 3
INPUT POWER	14 HP Carbureted Gasoline Engine
START / STOP CONTROL	Manual start / stop
THROTTLE CONTROL	Manual
NOZZLE	Aerospace Polymer Nozzle
NOZZLE OUTLET SIZE	Approx. 10 in
NOZZLE FUNCTION	Wired remote
NOZZLE CONTROL	360-degree without power loss.
REMOTE	Handheld, 2-function push button (nozzle only), water-resistant
FUEL CAPACITY	1.5 gal
BATTERY	12 volt, 105 cold cranking amps
TRAILER	Bolt-on trailer package with adjustable hitch to match many different tow vehicles.
TIRES	18x8.50-8
MOUNTING	Skid mount or tow-behind trailer
OVERALL LENGTH W/ NOZZLE	84 in
FRAME WIDTH W/ WHEELS	43.5 in
HEIGHT	33 in
SKID MOUNT - FRAME LENGTH	38 in (with hitch removed)
SKID MOUNT - OVERALL LENGTH W/ NOZZLE	56 in (with hitch removed)
SKID MOUNT - FRAME WIDTH	24 in
WEIGHT	347 lbs (157 kg)
SHIPPING WEIGHT	408 lbs (185 kg)
MACHINE WARRANTY	10-Year Manufacturer Warranty
ENGINE / MOTOR WARRANTY	3-Year Engine Manufacturer's Warranty
PROP 65	WARNING: Cancer & Reproductive Harm – P65Warnings.ca.gov



## OPTIONS

180 Zoar Valley Road  
Springville, NY 14141

### NOZZLES +

### ALUMINUM NOZZLES



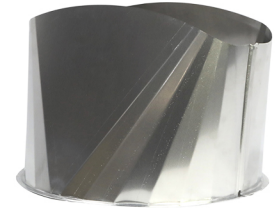
Aerospace Polymer Nozzle - Part# 5167

#### Quick Connect Clamp Band Part# 12-4935

Quickly remove or add nozzle with the barrel style clamp band.



**10" Rectangular Nozzle - Part# 12-1469**  
5.5"x15" opening - extra length/more concentrated air flow. Uses - heavy wet debris, plugs, top dressing. No ground clearance in the vertical down position.



**12" Round Nozzle - Part# 12-1172**  
Improves air velocity with lower horsepower and hydraulic blower units



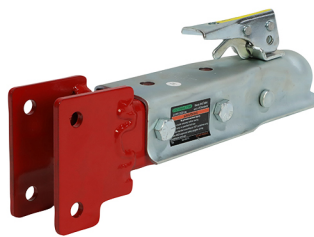
#### CLAMP BAND W/ BOLT & NUT

Part# 12-1173



#### 2" BALL RECEIVER HITCH

Part# 4605



#### FORK POCKETS

Part# 4552

Great for moving blowers around jobsites and bed mount / skid mount applications.



#### CORDED CONTROL

Part# 5579 for 8000EFI Model



**WARNING:**  
Cancer & Reproductive Harm -  
[www.P65Warnings.ca.gov](http://www.P65Warnings.ca.gov)