

CYCLONE 8000 EFI

DEBRIS BLOWER

FEATURES

- 14HP EFI GASOLINE ENGINE.
- ENTRY LEVEL SELF CONTAINED TOW BEHIND.
- WIRELESS START/STOP/THROTTLE & NOZZLE CONTROL.
- 360° NOZZLE ROTATION w\Auto Positioning.
- COMPACT LIGHTWEIGHT DESIGN.
- IDEAL FOR HOMEOWNERS AND RESIDENTIAL LANDSCAPERS.



SPEC	
TYPE	Tow Behind
DEBRIS TYPE	Dust, Grass, Leaves, Sand
ACREAGE	1 to 3
INPUT POWER	14HP EFI Gasoline Engine
START / STOP CONTROL	Wireless remote start / stop
THROTTLE CONTROL	Wireless remote
NOZZLE	Aerospace Polymer Nozzle
NOZZLE OUTLET SIZE	Approx. 10 in
NOZZLE FUNCTION	Wireless remote
NOZZLE CONTROL	360 degree, auto position without power loss.
REMOTE	Hand held, 10 function push button, water resistant
FUEL CAPACITY	1.5 gal
BATTERY	12 volt, 105 cold cranking amps
TRAILER	Bolt-on trailer package with adjustable hitch to match many different tow vehicles.
TIRES	18x8.50-8
MOUNTING	Skid mount or tow behind trailer
OVERALL LENGTH W/ NOZZLE	84 in
FRAME WIDTH W/ WHEELS	43.5 in
HEIGHT	33 in
SKID MOUNT - FRAME LENGTH	38in with hitch removed.
SKID MOUNT - OVERALL LENGTH W/ NOZZLE	56in with hitch removed.
SKID MOUNT - FRAME WIDTH	24 in
WEIGHT	352 lbs (160 kg)
SHIPPING WEIGHT	413 lbs (187 kg)
MACHINE WARRANTY	10 Year Manufacturer Warranty
ENGINE / MOTOR WARRANTY	3 Year Engine Manufacturer's Warranty
PROP 65	WARNING: Cancer and Reproductive Harm - www.P65Warnings.ca.gov



OPTIONS

180 Zoar Valley Road

Springville, NY 14141

NOZZLES +

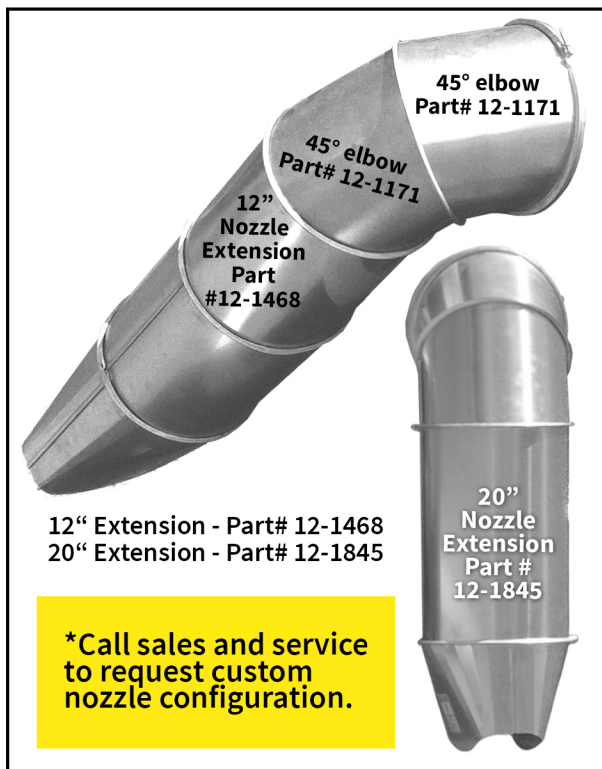
ALUMINUM NOZZLES



Aerospace Polymer Nozzle - Part# 5167

Quick Connect Clamp Band Part# 12-4935

Quickly remove or add nozzle with the barrel style clamp band.

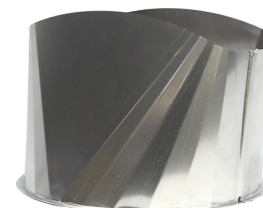


12" Extension - Part# 12-1468
20" Extension - Part# 12-1845

***Call sales and service
to request custom
nozzle configuration.**

10" Rectangular Nozzle - Part# 12-1469

5.5"x15" opening - extra length/more concentrated air flow. Uses - heavy wet debris, plugs, top dressing. No ground clearance in the vertical down position.



12" Round Nozzle - Part# 12-1172

Improves air velocity with lower horsepower and hydraulic blower units



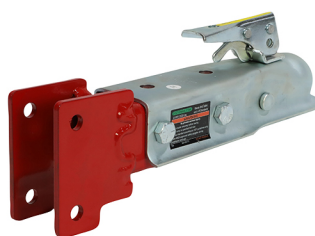
CLAMP BAND W/ BOLT & NUT

Part# 12-1173



2" BALL RECEIVER HITCH

Part# 4605



FORK POCKETS

Part# 4552

Great for moving blowers around jobsites and bed mount / skid mount applications.



CORDED CONTROL

Part# 5579 for 8000EFI Model



WARNING:
Cancer & Reproductive Harm -
www.P65Warnings.ca.gov