



BUFFALO TURBINE

Est. 1949

FEATURES

- 14KW BATTERY w\Electric Motor.
- *INDUSTRY FIRST BATTERY POWERED TOW-BEHIND TURBINE DEBRIS BLOWER.
- IDEAL FOR COMMERCIAL AND RESIDENTIAL LOCATIONS.
- WIRELESS 10 BUTTON REMOTE CONTROL.
- 360° NOZZLE ROTATION w\Auto Positioning.
- COMPACT LIGHTWEIGHT DESIGN.

CYCLONE **eKB14KW**

DEBRIS BLOWER



SPEC

TYPE	Tow Behind
DEBRIS TYPE	Dust, Grass, Leaves, Sand
ACREAGE	1 to 3, 4 to 6
INPUT POWER	14KW Battery with Electric Motor
START / STOP CONTROL	Wireless remote start / stop
THROTTLE CONTROL	Wireless remote
NOZZLE	Aerospace Polymer Nozzle
NOZZLE OUTLET SIZE	Approx. 10 in
NOZZLE FUNCTION	Wireless remote
NOZZLE CONTROL	360 degree, auto position without power loss.
REMOTE	Hand held, 10 function push button, water resistant
FUEL CAPACITY	n/a
BATTERY	48 volt, dual 5KW or 7KW
TRAILER	Bolt-on trailer package with adjustable hitch to match many different tow vehicles.
TIRES	18x8.50-8
MOUNTING	Skid mount or tow behind trailer
OVERALL LENGTH W/ NOZZLE	48 in
FRAME WIDTH W/ WHEELS	30 in
HEIGHT	49 in
SKID MOUNT - FRAME LENGTH	49in with hitch removed
SKID MOUNT - OVERALL LENGTH W/ NOZZLE	65.5in with hitch removed.
SKID MOUNT - FRAME WIDTH	28.5 in
WEIGHT	600 lbs (272 kg)
SHIPPING WEIGHT	671 lbs (305 kg)
MACHINE WARRANTY	10 Year Manufacturer Warranty
ENGINE / MOTOR WARRANTY	1 Year Motor Manufacturer's Warranty
PROP 65	WARNING: Cancer and Reproductive Harm - www.P65Warnings.ca.gov





OPTIONS

180 Zoar Valley Road
 Springville, NY 14141

NOZZLES +



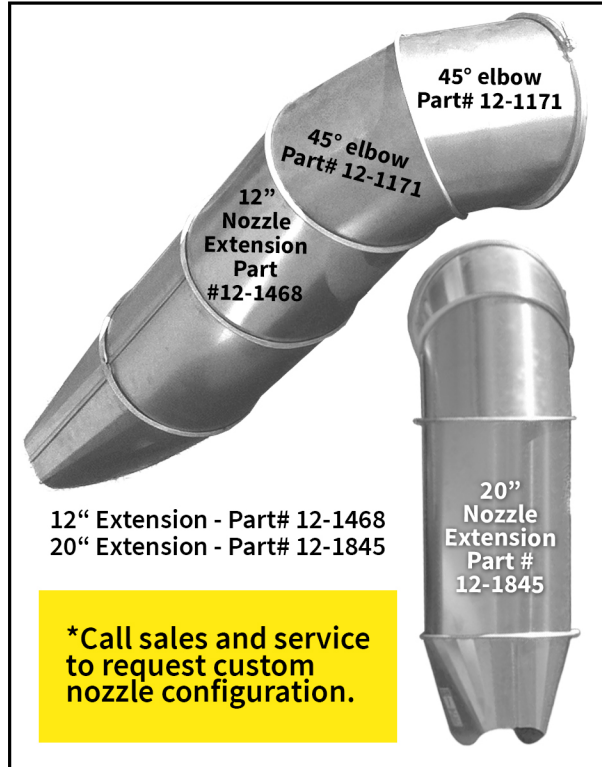
Aerospace Polymer Nozzle - Part# 5167

Quick Connect Clamp Band
 Part# 12-4935

Quickly remove or add nozzle with the barrel style clamp band.



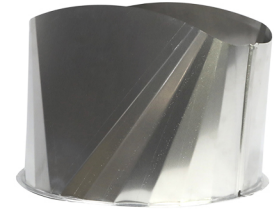
ALUMINUM NOZZLES



12" Extension - Part# 12-1468
 20" Extension - Part# 12-1845

***Call sales and service to request custom nozzle configuration.**

10" Rectangular Nozzle - Part# 12-1469
 5.5"x15" opening - extra length/more concentrated air flow. Uses - heavy wet debris, plugs, top dressing. No ground clearance in the vertical down position.



12" Round Nozzle - Part# 12-1172
 Improves air velocity with lower horsepower and hydraulic blower units



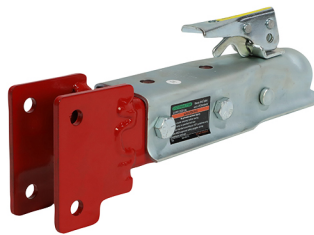
CLAMP BAND W/ BOLT & NUT

Part# 12-1173



2" BALL RECEIVER HITCH

Part# 4605



FORK POCKETS

Part# 4552

Great for moving blowers around jobsites and bed mount / skid mount applications.



CORDED CONTROL

Part# 5579 for 8000EFI Model



WARNING:
 Cancer & Reproductive Harm -
www.P65Warnings.ca.gov