

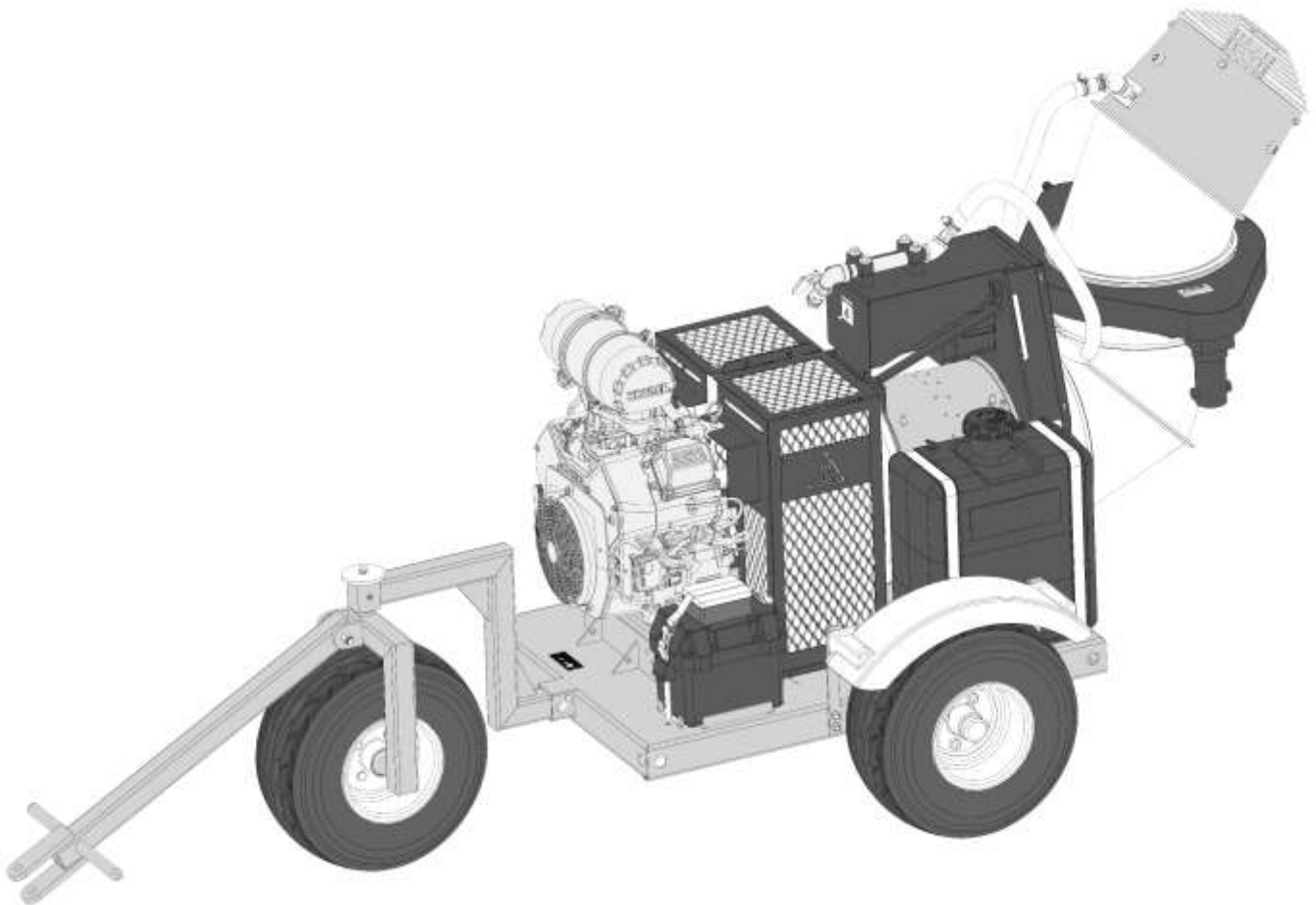
# BUFFALO TURBINE

180 Zoar Valley Road  
Springville, NY 14141

TEL: 716 592 2700 FAX: 716 592 2460

EMAIL: [info@buffaloturbine.com](mailto:info@buffaloturbine.com)

WEBSITE: [www.buffaloturbine.com](http://www.buffaloturbine.com)



## BUFFALO TURBINE'S BT-MGC4 ORIGINAL INSTRUCTIONS AND PARTS MANUAL

REV A -BT ENG

# TABLE OF CONTENTS

Ref. Number	Description	Page Number
1.0	Introduction	2
2.0	Safety	3
2.1	Safety Decals	4
2.2	General Safety	4
2.3	Operating Safety	4
2.4	Maintenance Safety	4
2.5	Transport Safety	5
2.6	Storage Safety	5
2.7	Sign-off Form	5
3.0	Warranty Information	6
3.1	Warranty Registration Form	7
4.0	Operations	8
4.1	To the new operator or owner	8
4.2	Break-in	8
4.3	Pre-Operation Checks	8
4.4	Model BT-MGC4 Assembly Instructions	9-10
4.5	Field Operation	11
4.6	Operating RPM	11
4.7	Storage	11
5.0	Troubleshooting	11
6.0	Machine Specification	12
7.0	Maintenance	13
7.1	Maintenance Safety	13
7.2	Fluids	13
7.3	Service Checklist	13
	Declaration of Conformity	14
	Morflex Coupling Parts	15
	Morflex Coupling Installation	16
	BT-MGC4 Parts Reference (Beginning w/ Serial #44404)	17
	Oscillation Attachment Kit Parts Diagram	18
	BT-MGC4 Sub Assemblies	19-20
	Gyratory Atomizing Nozzle parts breakdown	21
	Bill of Materials for BT-MGC4	23
	BT-MGC4 Wireless Remote System Manual	24-25
	Wireless system warranty information	25
	Wire Identification	26
	Starting Engine Manually w/ Key Switch	27
	Trouble Shooting for BT-MGC4 Remote / Receiver	28-31
	Nozzle Options	32
	Buffalo Turbine Additional Products	33

## 1.0 INTRODUCTION

Congratulations on your choice of a Buffalo Turbine Monsoon. This equipment has been designed and manufactured to meet the needs of the construction/demolition industry.

Safe, efficient and trouble-free operation of your Buffalo Turbine Monsoon requires that you and anyone else, who will be operating or maintaining the Blower, read and understand all of the safety, operation, maintenance and troubleshooting information contained within this Operator's manual.

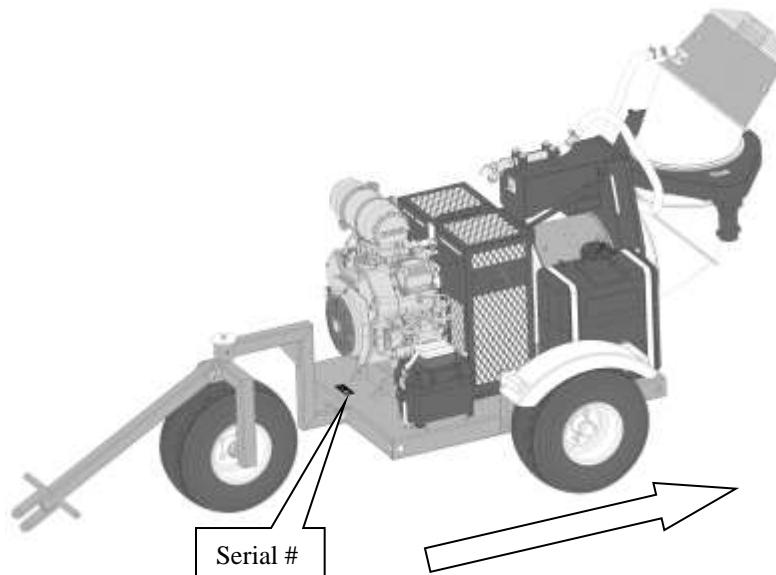
This Manual covers the BT-MGC4 Turbine Monsoon.

Keep this manual handy for frequent reference and to pass on to new operators or owners. Call your Buffalo Turbine dealer or distributor if you need assistance, information, or additional copies of the manuals.

## SERIAL NUMBER LOCATION

Always give your dealer the serial number of your Monsoon when ordering parts or requesting service or other information.

The serial number plate(s) is located where indicated in the pictures below. Please document the number in the space provided for easy reference.



**OPERATOR ORIENTATION** – The directions left, right, front and rear, as mentioned throughout the manual, are as seen from the driver's seat and facing in the direction of travel.

### MODEL BT-MGC4 RIGHT FRONT TOP SURFACE OF FRAME

Serial Number: \_\_\_\_\_

## 2.0 SAFETY

**YOU** are responsible for the **SAFE** operation and maintenance of your Buffalo Turbine Monsoon. **YOU** must ensure that you and anyone else, who is going to operate, maintain or work around the Buffalo Turbine Monsoon be familiar with the operating and maintenance procedures and related **SAFETY** information contained in this manual. This manual will take you step-by-step through your working day and alerts you to all good safety practice while operating the Monsoon.

Remember **YOU** are the key to safety. Good safety practices not only protect you but also the people around you. Make these practices a working part of your safety program. Be certain that **EVERYONE** operating this machine is familiar with the procedures recommended and follows safety precautions. Remember most accidents can be prevented. Do not risk injury or death by ignoring good safety practices.

- Monsoon owners must give operating instructions to operators or employees before allowing them to operate the Monsoon, and at least annually thereafter.
- The most important safety device on this equipment is a **SAFE** operator. It is the operator's responsibility to read and understand **ALL** Safety and Operating instructions in the manual and to follow these. All accidents can be avoided.
- A person who has not read and understood all operating instructions is not qualified to operate the machine. An untrained operator exposes themselves and bystanders to possible serious injury or death.
- Do not modify the equipment in any way. Unauthorized modification may impair the function and/or safety which could affect the life of the equipment.
- Think **SAFETY!** Work **SAFELY!**

This Safety Alert symbol means **ATTENTION! BECOME ALERT! YOUR SAFETY IS INVOLVED!**

The Safety Alert symbol identifies important safety messages on the Buffalo Turbine Monsoon and in the manual. When you see this symbol, be alert to the possibility of personal injury or death. Follow the instructions in the safety message.

Why is **SAFETY** important to you?



**3 Big Reasons: Accidents Disable and Kill  
Accidents Cost  
Accidents Can Be Avoided**

**SIGNAL WORDS:** Note the use of the signal words **DANGER**, **WARNING** and **CAUTION** with the safety messages. The appropriate signal word for each message has been selected using the following guidelines

1. **DANGER** –injury or death if the proper precautions are not taken.
2. **WARNING** -- A specific hazard or unsafe practice that **COULD** result in severe personal injury or death if proper precautions are not taken.
3. **CAUTION** – Unsafe practices that **COULD** result in personal injury if proper practices are not taken, or as a reminder of good safety.

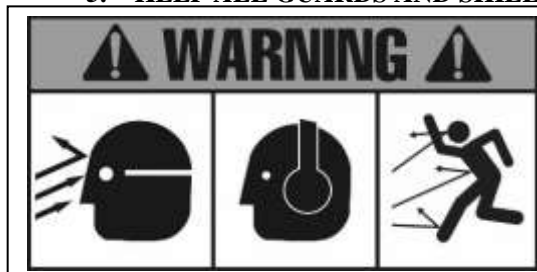
**The Safety Alert symbol identifies important safety messages on the Buffalo Turbine Monsoon and in the manual. When you see this symbol, be alert to the possibility of personal injury or death. Follow the instructions in the safety message.**

## 2.1 SAFETY DECALS

The types of decals on the blower unit are shown below. Good safety requires that you familiarize yourself with the various Safety Decals, the type of warning and the area, or particular function related to that area that requires your **SAFETY AWARENESS.\* THINK SAFETY! WORK SAFELY!**

### !ATTENTION!

1. **KEEP HANDS, FEET AND CLOTHING AWAY FROM POWER DRIVEN PARTS.**
2. **STOP ENGINE AND REMOVE KEY BEFORE LEAVING OPERATOR'S POSITION.**
3. **MACHINE MUST COME TO A COMPLETE STOP BEFORE ANY MAINTENANCE, TO INCLUDE ADJUSTING, LUBRICATING OR CLEANING, IS PERFORMED.**
4. **KEEP PEOPLE AND PETS AT SAFE DISTANCE FROM MACHINE.**
5. **KEEP ALL GUARDS AND SHIELDS IN PLACE.**



\*Never operate without eye protection due to blowing debris\*

\*Never operate without ear protection due to prolonged exposure to excessive noise\*

\*Thrown objects can cause serious injury\*



Never operate without guards in place because there are sharp rotating components that will cause serious injury.

**REMEMBER – If safety decals have been damaged, removed, become illegible or parts replaced without decals, new decals must be applied. New decals are available from your authorized dealer.**

## 2.2 GENERAL SAFETY

1. Read and understand the Operator's Manual and all safety signs before operating, maintaining, and adjusting.
2. Provide a first-aid kit for use in case of an accident. Store in a highly visible place.
3. Provide a fire extinguisher for use in case of an accident. Store in a highly visible place.
4. Wear appropriate protective gear. This list includes but is not limited to:
  - A hard hat
  - Protective shoes with slip resistant soles
  - Protective glasses or goggles
  - Heavy gloves
  - Wet weather gear
  - Hearing protection
5. Do not operate without guards or shields properly installed.
6. Do not allow riders.
7. **Wear appropriate ear protection for prolonged exposure to excessive noise.**
8. **(All Models) Set Blower on the ground, stop engine, chock wheels, remove ignition key and wait for all moving parts to stop before dismounting to service or adjust.**
9. Clear the area of people, especially small children, before starting the unit.
10. Review all safety related items annually with all personnel who will be operating or maintaining the Blower.
11. Keep hands, feet, hair and clothing away from moving parts. Operate equipment only while seated in the operator's seat.

## 2.3 OPERATING SAFETY

1. Read and understand the Operator's Manual and all safety signs before operating, servicing or adjusting.
2. Before servicing or repairing, **Set Monsoon on the ground, stop engine, chock wheels, remove key, and wait for all moving parts to stop.**

## 2.4 MAINTENANCE SAFETY

1. Read and follow ALL general, operating, maintenance and safety information in this manual.
2. Support the machine with blocks or safety stands when changing tires or working beneath it.
3. Set Monsoon on the ground, stop engine, chock wheels, remove ignition key and wait for all moving parts to stop before operating, servicing or adjusting.
4. Make sure all guards are in place and properly secured when operating or maintaining the Blower.  
\* NEVER HAVE NOZZLE POINTING AT/NEAR ANYONE DURING STARTUP\*



## Buffalo Turbine Warranty Policy

### 3.0 MACHINE WARRANTY INFORMATION

Buffalo Turbine warrants the DEBRIS BLOWER, to the original owner, to be free from defects in material and workmanship, under normal use and service. **All machines must have a completed registration form sent to Buffalo Turbine within 30 days of purchase for warranty to apply.** Obligation under this warranty shall extend for a period of 10 years from date of purchase and, at the option of Buffalo Turbine, replacement of any parts found, upon inspection by Buffalo Turbine, to be defective. Any parts replaced under warranty will have the remainder of the warranty from the original date of purchase.

**Warranty parts during first 2 years will be shipped free of charge via standard ground shipping**

**\*If expedited shipping is required charges will be paid by the end user\***

Year 1: parts and labor

Year 2: parts only

**Customer will be required to pay shipping charges for years 3-10**

Year 3: Engine, per engine manufacturer's standard / Turbine Assembly / Frame (parts only)

Year 4-10: Turbine Assembly / Frame (parts will be prorated)

**Buffalo Turbine reserves the right to incorporate improvements in material and design of its products without notice and is not obligated to make the same improvements to equipment previously manufactured.**

**ALL WARRANTY REPAIRS NEED PRE-APPROVAL BY A FACTORY PERSON (FROM BUFFALO TURBINE) PRIOR TO COMMENCING WITH A WARRANTY REPAIR TO INCLUDE SERIAL NUMBER AND HOURS FROM HOUR METER (IF EQUIPPED). PRE-APPROVAL WILL BE REQUIRED BY THE END USER AND DEALER/DISTRIBUTOR LEVEL.**

**Factory ordered Buffalo Turbine parts must be used when filing a warranty claim.**

### **LIMITATIONS OF LIABILITY**

This warranty is expressly in lieu of all other warranties expressed or implied and all other obligations or liabilities on our part of any kind or character, including liabilities for alleged representations or negligence. We neither assume nor authorize any other person to assume on our behalf, any liability in connection with the subsequent sale of the **DEBRIS BLOWER**. This warranty shall not apply to any DEBRIS BLOWER, which has been altered outside the factory in any way so as, in the judgment of Buffalo Turbine, to affect its operation or reliability, or which has been subject to misuse, neglect, or accident. This warranty does not cover parts and accessories, which are under separate guarantee from the manufacturers and service can be, obtained from their service facilities. No warranty is extended to regular service items such as lubricants, belts, paint and the like.

### **Original Instruction Manual**

The Purchaser acknowledges having receiving training in the safe operation of the DEBRIS BLOWER and further acknowledges that Buffalo Turbine does not assume any liability resulting from the operation of the DEBRIS BLOWER in any manner other than described in the Operator's Manual supplied at the time of purchase.

**WARRANTY VOID IF NOT REGISTERED (see Page 2 for warranty registration form)**

**DO NOT SPLIT THE TURBINE HOUSING FOR ANY REASON.**

**DO NOT ATTEMPT TO SERVICE OR DISASSEMBLE THE TURBINE BLOWER.**

**DO NOT USE THE TOP OF THE TURBINE HOUSING TO STRAP OR TIE DOWN BLOWER UNITS.**

**Unauthorized service work on the Turbine Blower will null and void all warranties.**

If there are any questions regarding any of our products call Buffalo Turbine at 716 592 2700.

### 3.1 Warranty Registration Form

## BUFFALO TURBINE

### WARRANTY REGISTRATION FORM & INSPECTION REPORT

Any units not registered with Buffalo Turbine are not eligible for warranty claims  
This form must be filled out by the dealer and signed by both the dealer and the customer at the time of delivery

Customer's Name \_\_\_\_\_ Dealer's Name \_\_\_\_\_

Address \_\_\_\_\_ Address \_\_\_\_\_

City, State, Zip, Country \_\_\_\_\_ City, State, Zip, Country \_\_\_\_\_

Email Address (important) \_\_\_\_\_ Email Address \_\_\_\_\_

Telephone Number \_\_\_\_\_

Blower Model \_\_\_\_\_

**Circle one:**

Serial Number \_\_\_\_\_

Commercial Use

Delivery Date \_\_\_\_\_

Private Use

#### DEALER INSPECTION REPORT

#### SAFETY CHECKS

\_\_\_\_\_ Tire Pressure Check -- Model KB

\_\_\_\_\_ All Decals Installed

\_\_\_\_\_ Wheel Bolts

\_\_\_\_\_ Review Operating and Safety Instructions

\_\_\_\_\_ Belt Tension

\_\_\_\_\_ Lubricate Machine

\_\_\_\_\_ Guards in Place

\_\_\_\_\_ Fasteners Tight

\_\_\_\_\_ Trailer assembly bolts properly installed and tightened

#### **ALL 3 POINT HITCH MODELS: PTO SHAFTS MUST TELESCOPE IN EVERY POSITION**

I have thoroughly instructed the buyer on the above described equipment which reviews the included Operator's Manual content, equipment care, adjustments, safe operation and applicable warranty policy.

Date \_\_\_\_\_

Dealer's Rep. Signature \_\_\_\_\_

The above equipment and Operator's Manual has been received by me and I have been thoroughly instructed as to the care, adjustments, safe operation and applicable warranty policy.

Date \_\_\_\_\_

Owner's Signature \_\_\_\_\_

**PLEASE EMAIL TO BUFFALO TURBINE AT - [service@buffaloturbine.com](mailto:service@buffaloturbine.com)**

**Or fax to 716 592 2460**

## 4.0 OPERATIONS

### 4.1 TO THE NEW OPERATOR OR OWNER

Buffalo Turbine Monsoon are designed to spray a fine mist of water particles to control dust. The material is conveyed on a stream of high volume and velocity of air and water to remove it from the area of concern.

Many of the features incorporated into the machine are the result of suggestions made by customers like you. Read the manual carefully to learn to operate the machine safely and how to set it to provide maximum efficiency. The manual will take you step-by-step through your working day. By following the operating instructions in conjunction with a good maintenance program, your Blower will provide many years of trouble-free service

#### Potential Mechanical Hazards while operating your machine:

Never operate the debris blower around others to prevent the possibility of being run over by equipment.

Never ride on your debris blower to prevent the possibility of being thrown off the machine or hurt severely.

#### Potential Crushing Hazards while operating your machine:

Between Trailer Tongue and mounting hitch on towing vehicle



#### WARNING:

This Product can expose you to chemicals including carbon monoxide and benzene, which are known to the State of California to cause cancer and birth defects or other reproductive harm.

For more information go to [www.P65Warnings.ca.gov](http://www.P65Warnings.ca.gov).

### 4.2 BREAK-IN

Although there are no operational restrictions on the Blower when it is used for the first time, it is recommended that the following mechanical items be checked:

#### A. Operating for first ½ hour

1. Re-torque all wheel bolts, axle nuts and trailer mounting bolts and nuts.
2. Re-torque all other fasteners and hardware.
3. Check set screw (nozzle pulley) to ensure it tightened.

#### B. Operating for first 5 hours

1. Re-torque all hardware and fasteners.
2. Check set screw (nozzle pulley) to ensure it tightened.
3. Go to the normal servicing and maintenance schedule as defined in the Maintenance Section of the manual.

### 4.3 PRE-OPERATION CHECKS

Efficient and safe operation of the Buffalo Turbine Blower requires that each operator reads and understands the operating procedures and all related safety precautions outlined in this section. A pre-operation checklist is provided for the operator. It is important for both personal safety and maintaining the good mechanical condition of the machine that this checklist is followed.

#### BATTERY MUST BE CONNECTED BEFORE OPERATION (DISCONNECTED FOR SHIPPING).

Before Operating the Blower and each time thereafter, the following areas should be checked off.

1. For fuel, oil, and operating information of the Kohler Engine, refer to the Manufacturers specs included with this manual.
2. The Model KB turf trailer is not designed for highway towing. For highway use or speeds above 15mph (24kph) an optional DOT approved trailer must be used.
3. Insure the Blower unit is attached to a proper receiver mounted on the towing vehicle. A pin hitch receptacle is standard with the model KB. Attach the KB trailer using the proper size hitch pin with a locking presto pin.
4. Make sure all guards and shields are in place, secured and functioning as designed.
5. Check that all clamp bands are secure.
6. Check the belts and pulleys for proper tension and alignment.

#### Remote Nozzle and Throttle Control

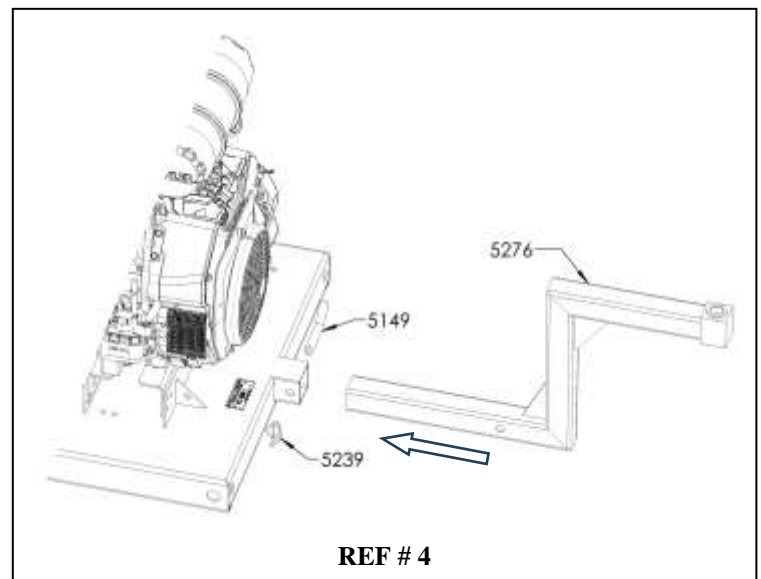
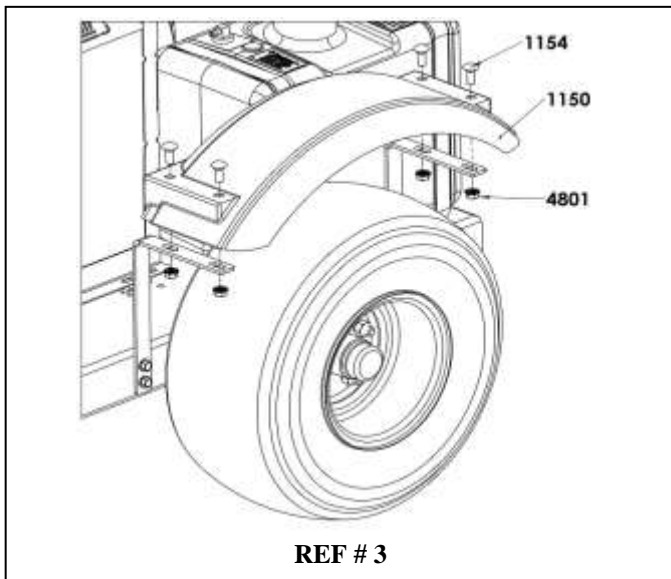
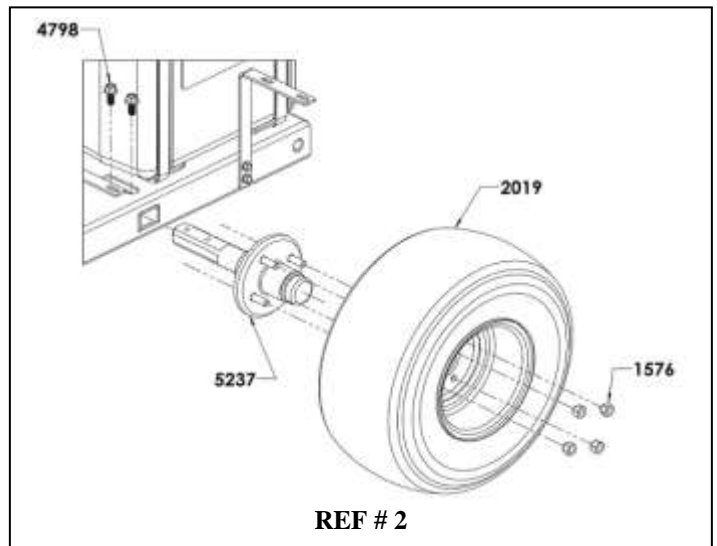
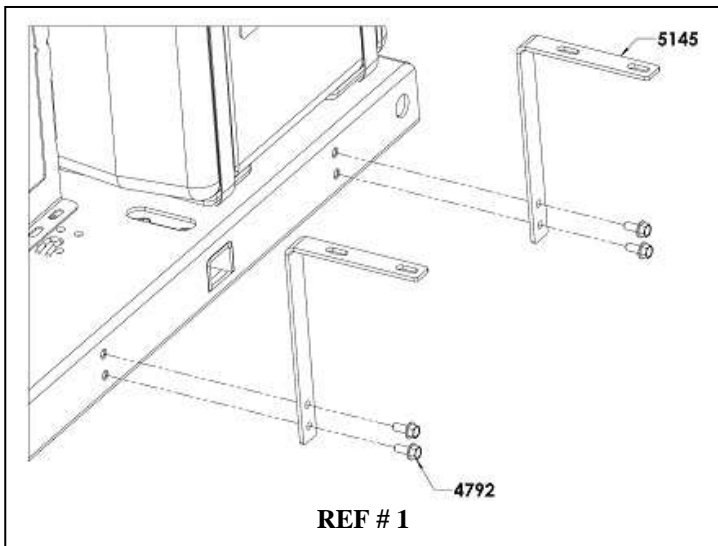
(REFERENCE PAGES 25-31 FOR WIRELESS REMOTE INSTRUCTIONS)

The throttle control adjusts the engine RPM from an idle to maximum RPM and the nozzle control adjusts the rotation of the nozzle assembly (360° in either direction).

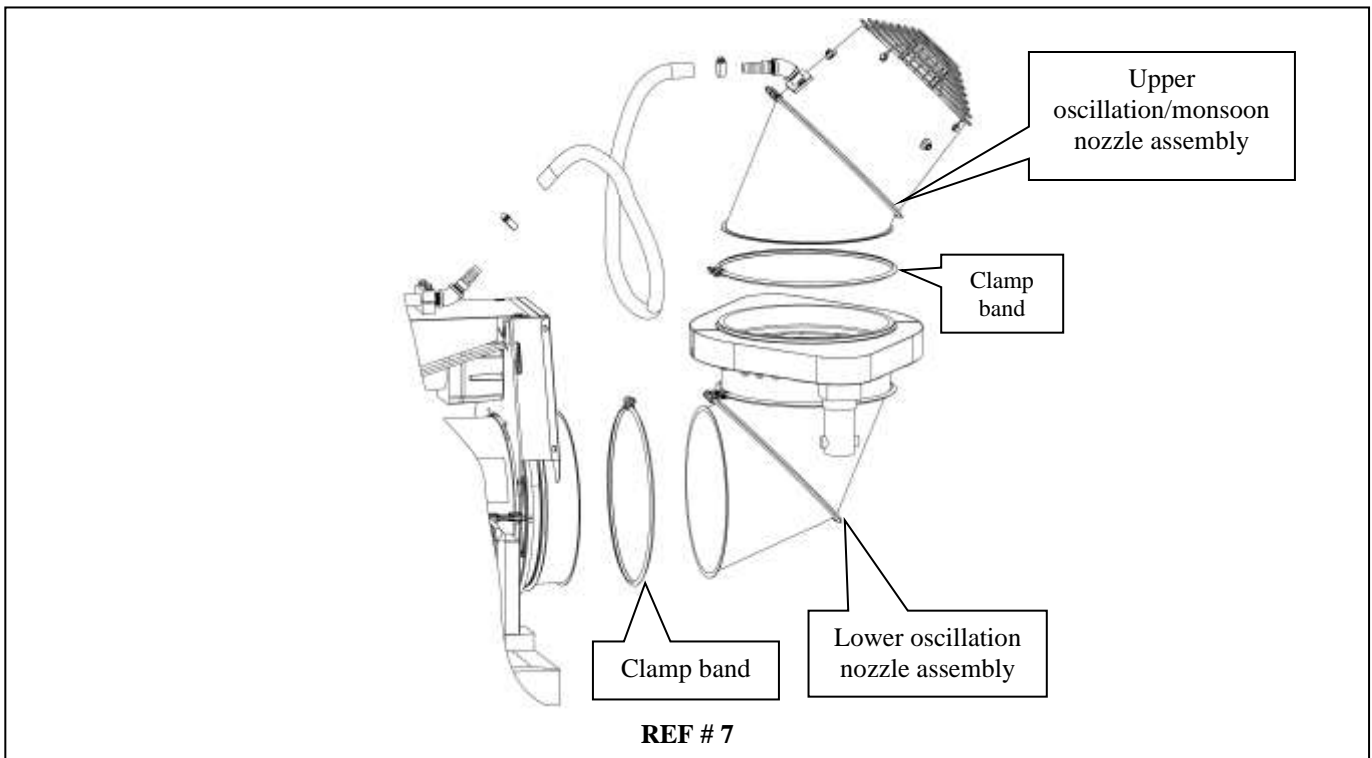
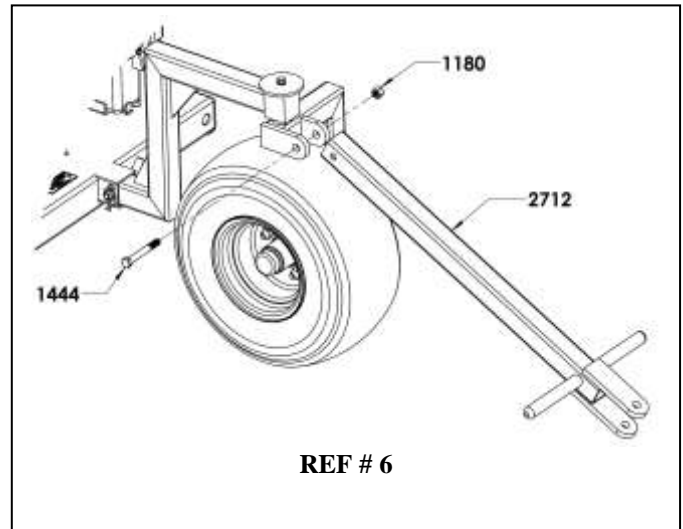
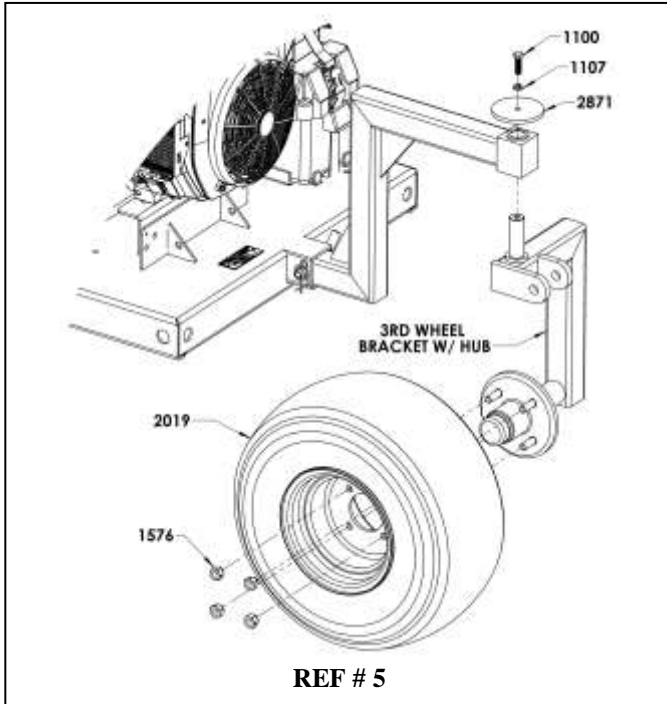
**CAUTION!** DO NOT ALLOW LEAVES OR DEBRIS TO ACCUMULATE ON OR NEAR THE ENGINE OR EXHAUST SYSTEM OF THE MODEL KB BLOWER, TRACTOR ENGINE OR ANY INTERNAL COMBUSTION ENGINE.

#### 4.4 MODEL BT-MGC4 Assembly Instructions

1. Fill engine oil to proper level. (overseas shipments)
2. Attach 2 Fender Brackets (part# 5145) with 2 bolts each (part# 4792). Tighten bolts. (REF#1). **REPEAT ON OTHER SIDE OF FRAME.**
3. Attach axle stub shaft assembly (part # 5237) using 2 bolts (part # 4798). Tighten bolts. (REF#2). **REPEAT ON OTHER SIDE OF FRAME.**
4. Install Tire (part # 2019) with lug nuts (part # 1576). Torque lug nuts to 80 Ft-Lbs. (REF#2). **REPEAT ON OTHER STUB SHAFT ASSEMBLY.**
5. Attach both fenders (part # 1150) using (4) 3/8-16 x 1" carriage bolts (part # 1154) and 3/8-16 flange nuts (part # 4801) (REF#3)
6. Attach the 3<sup>rd</sup> wheel bracket (part # 5276) to the frame using the bent hitch pin (part # 5149) and clip pin (part # 5239) (REF#4)



7. Attach 3<sup>rd</sup> Wheel Arm to 3<sup>rd</sup> Wheel Bracket (See Ref # 5) using (part # 1100 / 1107 / 2871)
8. Install Tire (part # 2019) with lug nuts (part # 1576) (See Ref # 5). **Torque lug nuts to 80 Ft-Lbs.**
9. Attach Tow Bar/Handle (part # 2712) using the bolt (part # 1444) and nyloc nut (part # 1180). Tighten at this time. (See Ref # 6)
10. Recheck all mounting bolts to assure that they are tight.
11. Attach lower oscillation nozzle assembly (SEE REF # 7) to elbow base ring.
12. Attach upper oscillation / monsoon nozzle (SEE REF # 7) to lower oscillation nozzle assembly
13. Connect water hoses
14. Reattach positive battery cable (RED) and ground cable (Black) to proper terminals.



## 4.5 FIELD OPERATION

1. Do not direct monsoon towards people, pets, autos, windows, etc.
2. **Starting monsoon unit:** Always start engine at a lower engine speed with nozzle pointed down or away.
3. The air stream direction is changed (in either direction) by pressing the nozzle buttons on the transmitter. The nozzle will stop turning by releasing the transmitter button. **ALWAYS CHECK THE GROUND CLEARANCE WHEN OPERATING THE NOZZLE IN THE DOWN VERTICAL POSITION.**
4. **Stopping monsoon unit:** Shut engine off above ½ throttle by turning key switch to off position to avoid engine backfire. Press Engine Stop button on Transmitter. **Make sure Key Switch is turned off at the end of the day to prevent battery draining.**
5. Allow the blower fan speed to come to a complete stop before disconnecting from tow vehicle.

## 4.6 Operating RPM (All Models)

The manufacturer's engine section normally recommends the unit be run at a RPM that will insure efficient operation. The Monsoon can operate at a slower RPM. Increase engine RPM as needed. Always try to blow with the wind.

## 4.7 Storage

At the end of the working season or before storing the monsoon unit, prepare the machine by following this procedure:

1. Select a storage area that is dry, level and free of debris.
2. Thoroughly wash the machine with a water hose to remove all debris and residue. **DO NOT PRESSURE WASH**
3. Run the machine at low RPM to dry the Blower Components.
4. Touch up all paint chips and scratches to prevent rusting.
5. Inspect for worn or failed components. Order the replacement parts and repair the monsoon unit when time allows. This will eliminate unnecessary down time at the start of next season.
6. Store in an enclosed building. If space is not available, cover with a waterproof tarpaulin and tie it down securely.
7. Store the machine away from areas of human activity.
8. Do not allow children to play around the stored unit.

## 5.0 TROUBLE SHOOTING

The Buffalo Turbine Monsoon uses a high volume and velocity of air to move material from one place to another. The system is simple and reliable requiring minimal maintenance.

If you encounter a problem that is difficult to solve, even after reading through this trouble shooting section, please call your local dealer or distributor. **Before calling, please have this Operator's Manual and the serial number from your Blower ready.**

In the following section, we have listed causes and solutions to the problems that you may have encountered. **TURN OFF ENGINE, REMOVE KEY, AND DISCONNECT BATTERY BEFORE SERVICING BLOWER UNITS. INSTALL GUARDS BEFORE OPERATING.**

PROBLEM	CAUSE	SOLUTION
No air flow	Buildup of debris inside turbine	Remove nozzle and clean debris from inside turbine
	Broken coupling (KB Series)	Replace coupling
No air flow	Blower fan not turning	See solutions above
Reduced or no air flow	Blower fan turns	Air intake or exhaust restricted Shut off engine Blower or tractor – remove restrictions Debris cannot be allowed to build up between the blower fan and stationary vanes
Machine vibrates or Unusual sounds	Bearing or coupling failure Out-of-balance	Replace bearings or coupling Have your dealer check blower for damaged blades. Wash and clean blower fan blades
No throttle control		See diagnostic tests on pages 29-30
No nozzle control		See diagnostic tests on pages 31-32

## **6.0 Machine Specifications**

### **Model MGC4 Series**

<b>Length:</b>	<b>121.5" with wheels and handle 93.5" with wheels and handle (turned to side for transport) 70" with wheels and handle removed</b>
<b>Width:</b>	<b>47.5" with wheels 28.5" without wheels</b>
<b>Height:</b>	<b>54" with wheels 46" without wheels</b>
<b>Weight:</b>	<b>Approximately 700 lbs.</b>
<b>Electrical System:</b>	<b>12 Volt battery / 300 CCA</b>
<b>Fuel Capacity:</b>	<b>8 Gallon Unleaded Fuel only</b>
<b>Input Power:</b>	<b>ECH749 EFI Gas Engine</b>
<b>Outlet Size:</b>	<b>Approximately 12"</b>

## 7.0 MAINTENANCE SECTION

### 7.1 Maintenance Safety

1. Set Blower on a level surface, stop engine, set park brake, remove ignition key and wait for all moving parts to stop before dismounting to service, adjust or repair.
2. Reinstall and secure all guards removed for servicing before starting to use machine again. \*We recommend wearing gloves when removing or installing the guard to avoid getting cut\*
3. Securely support machine with blocks or safety stands when changing tires or working beneath it.

### 7.2 Fluids

Change oil per Manufacturer's specification (see Engine owner's manual section).  
A Teflon spray type lubricant on the nozzle base and slides provides for freer rotation.

### 7.3 SERVICE CHECKLIST

See Lubrication and Maintenance sections for details of service. Copy this page to continue record.

#### **TURN OFF ENGINE, REMOVE KEY & DISCONNECT BATTERY BEFORE SERVICING BLOWER UNIT**

CODE: LUBRICATE-(L) / CHECK- (\*) / CHANGE-(C) / REPLACE-(B) / CLEAN-(CL)

**SCHEDULED MAINTENANCE HOURS** \_\_\_\_\_

**SERVICED BY** \_\_\_\_\_

#### **MAINTENANCE**

##### **8 hrs. or daily**

- (\* Remove all debris that has settled between the blower wheel fan and the stationary vanes. Helps maintain peak performance.
- (\* Check engine oil and fill to proper level – Do not overfill
- (\* Check air filter and precleaner
- (CL) Clean debris from air intake and other cooling areas on the engine
- (\* Check tire pressure (Max. 50 PSI)
- (\* Check Clamp Band Bolt for tightness

##### **40 hrs. or weekly**

- (\* Check condition of coupling (center section # 1256) connecting bolts and nuts during each oil change or when experiencing vibration or unusual noises. (See page 15)
- (\* Inspect battery terminals for any corrosion, broken wires, or loose connections.
- (\* Remove Battery and clean debris from inside of battery box
- (L) Nozzle base slides (Teflon or Silicone spray)
- (\* Check set screw (nozzle pulley) to ensure it is tightened
- (\* Wash and Clean any dirt or grime build up that has accumulated on blower wheel fan blades. Helps to minimize vibration balance and maintain peak performance.

##### **200 hrs. or annually**

- (CL) Machine

**DO NOT OPERATE BLOWER UNIT WITHOUT GUARDS SECURELY ATTACHED**

*Debris Blowers, Vector Sprayers, Dusters  
and Dust Control Systems*

## Declaration of Conformity

### According to EC Machinery Directive 2006/42/EC, Annex II B

We, Buffalo Turbine of Springville, New York, USA herewith declare, that the following described machine/machinery part is to be incorporated into a(n) machine/assembly with other machinery to make one machine and that its setting into operation is prohibited unless the machine, which shall be incorporated into the lower mentioned, complies with the requirement of the EC Machinery Directive 2006/42/EC.

Product: Engine Monsoon

Type: BT-MGC4

Serial Number:

Order Number:

Applicable EC Directives: Machinery Directive 2006/42/EC  
Noise Emissions Directive 2000/14/EC +  
Amendment 2005/88/EC

Applicable Harmonized Standards: BSENISO 12100:2010  
ISO 3744:2010  
ISO 11094:1991

With a measured sound power level of:

L<sub>wa</sub> 120 dB

With a guaranteed sound power level of:

L<sub>wa</sub> 123dB

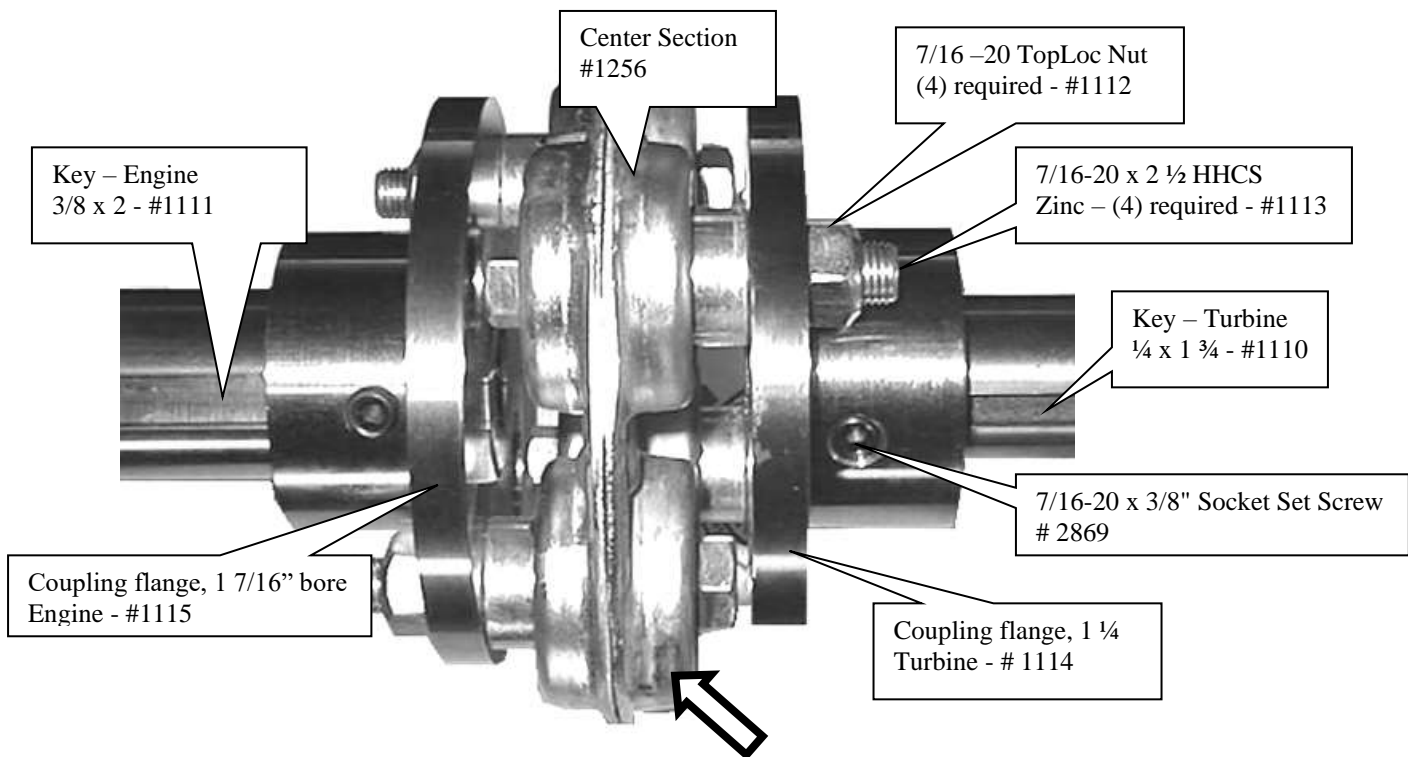
# INSTALLATION INSTRUCTIONS & PARTS FOR THE MORFLEX COUPLING

## PART # 1746 – COUPLING COMPLETE, KOHLER ENGINE

Includes PN 1110(1pc), 1111(1pc), 1112(4pc), 1113(4pc), 1114(1pc), 1115(1pc), 1256(1pc), 2869(4pc)

### ALIGNMENT OF TURBINE SHAFT WITH SHAFT OF ENGINE IS CRITICAL

1. Install keys in both shafts.
2. Slide coupling flanges on both shafts (engine and turbine shafts)
3. Place Morflex coupling CENTER SECTION between coupling flanges and secure with 4 bolts and TOPLOC nuts. The bolt heads are positioned against the coupling in alternating directions. Tighten all 4 bolts. DO NOT TIGHTEN SET SCREWS AT THIS TIME.
4. Check key for proper position under the set screw hole on both shafts.
5. Place several drops of Loctite 271 into these two holes only. Set screws and tapped screw holes must be free of dirt and oil for Loctite to work properly.
6. Install the set screws over the keys and tighten firmly.
7. Using a drill point, dimple each shaft through the other 2 set screw holes. Clean drill chips, oil and dirt before applying Loctite.
8. Place several drops of Loctite 271 in these 2 holes.
9. Install and tighten set screws in these 2 holes.
10. Check and retighten the 4 bolts that hold the coupling center section in place.
11. Visually inspect the unit and replace the guard. DO NOT OPERATE WITHOUT THE GUARDS IN PLACE.

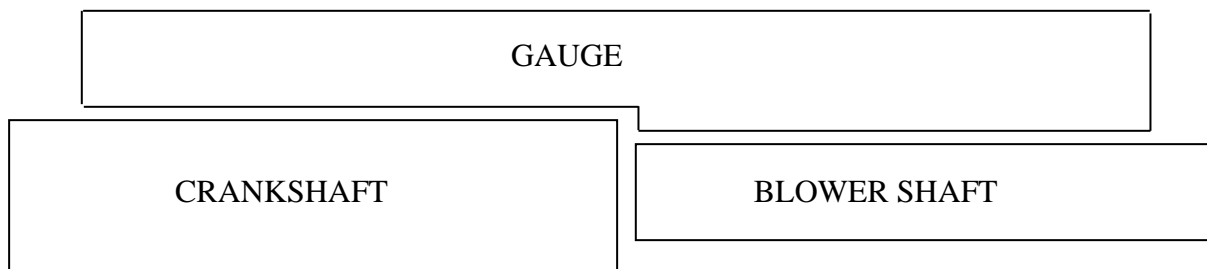


Part # 1256 (center section) is a **“WEAR”** item that should be visually checked each time the engine oil is changed. This coupling is equipped with special lock nuts. Occasionally check that all 4 nuts are securely fastened. **LOOK FOR CRACKS IN THE RUBBER COMPOSITION THAT SURROUNDS THE 4 BUSHINGS. Replace the center section when the rubber composition begins to show ANY signs of cracking OR an increase in vibration OR unusual sounds. When in doubt, call our Service Department.**

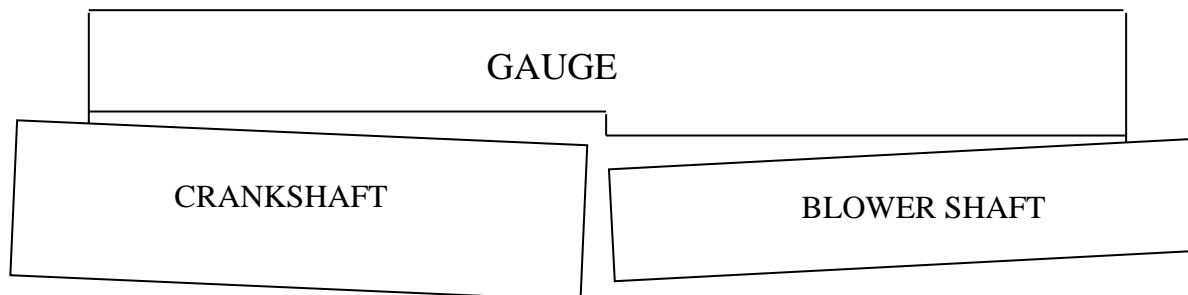
## **MOUNTING BLOWER ASSEMBLY ONTO FRAME** **AND ALIGNMENT RECOMMENDATIONS**

1. Install blower assembly onto frame and tighten all of the bolts.
2. Remove all burrs and oil from the shafts and keyways (engine and blower shafts).
3. Using the supplied gauge, align the shafts parallel to each other (very important).
4. Check in four places around the shafts at 90° to each other.
5. When properly aligned, gauge should have little to no gap between itself and the shafts at any point along the gauge.
6. To adjust, move the engine. The 2 mounting brackets have tapped holes in each corner to help support and adjust the position of the engine. The 4 roll pins may need to be repositioned after alignment is completed and bolts are tightened.
7. Tighten all engine bolts and recheck alignment. Drill and install 4 roll pins in new position.

### **ACCEPTABLE**

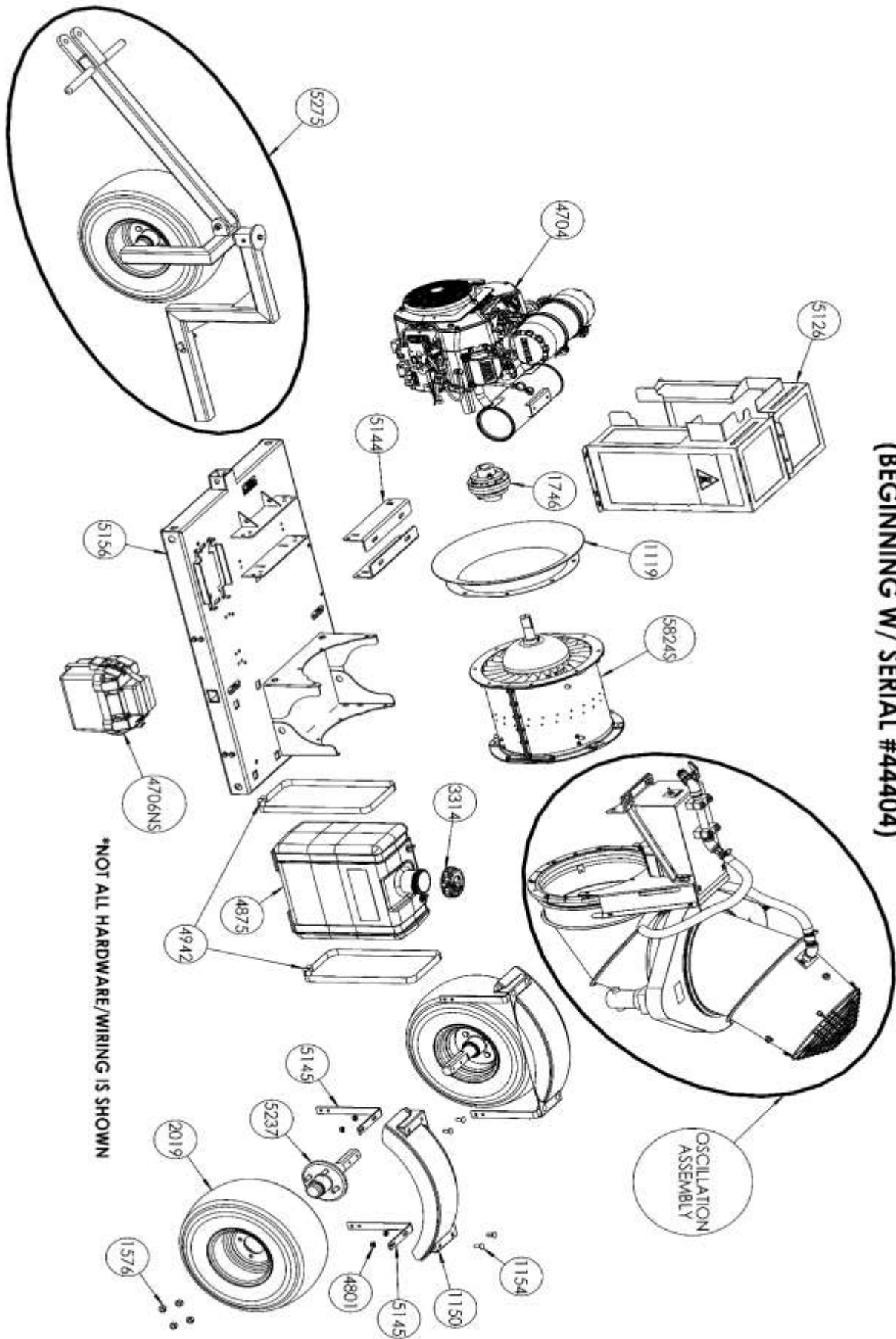


### **NOT ACCEPTABLE**



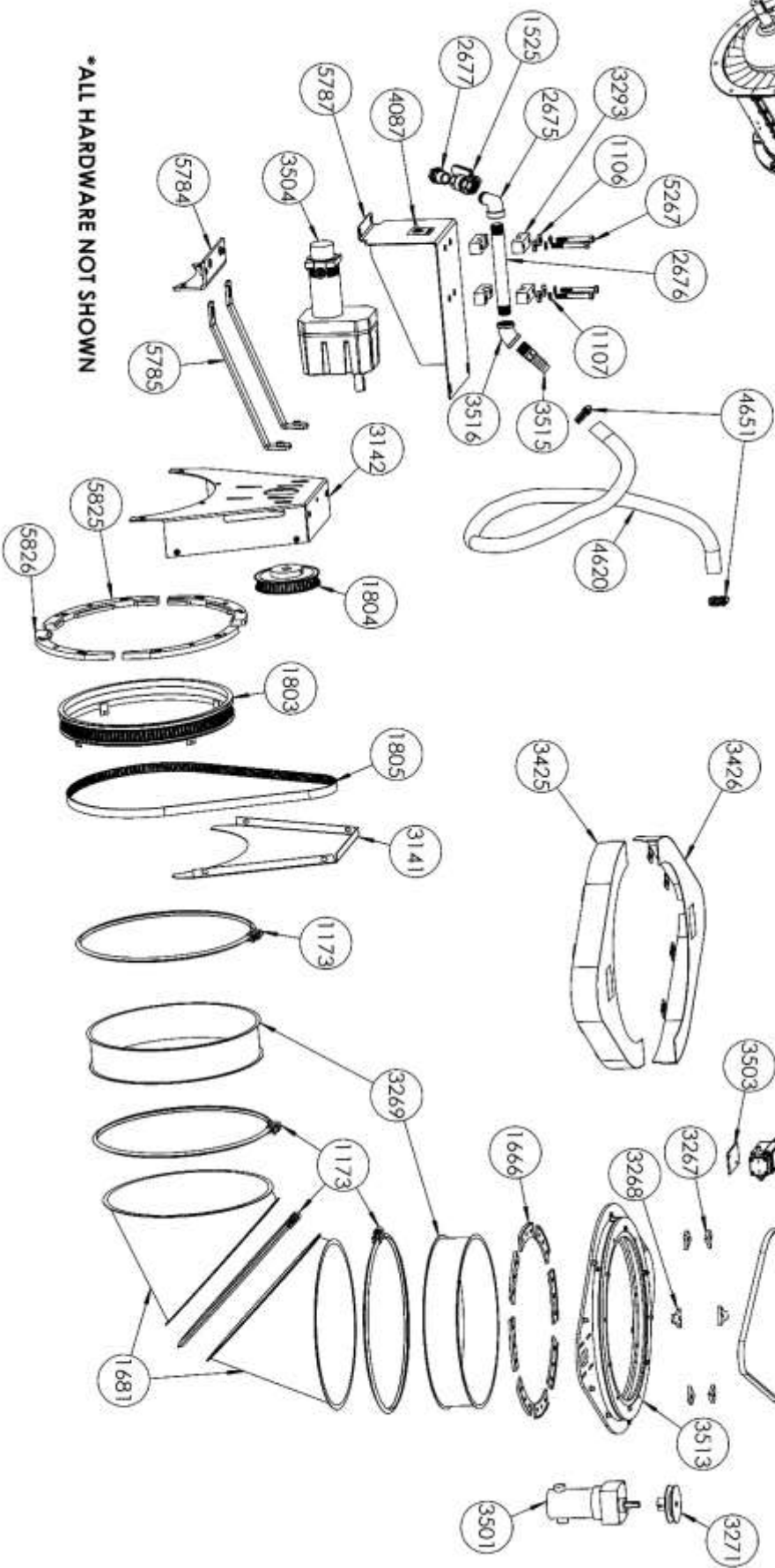
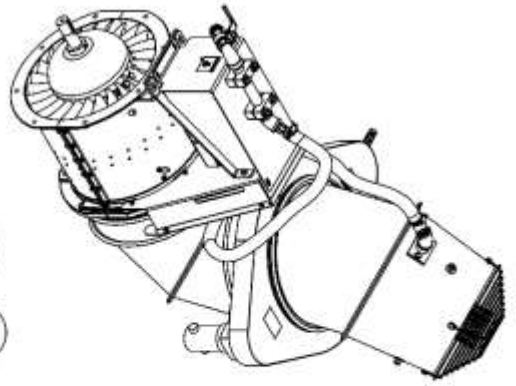
SECURELY ATTACH GUARDS BEFORE OPERATING BLOWER UNITS

# BT-MGCC4 PARTS REFERENCE (BEGINNING W/ SERIAL #44404)



\*NOT ALL HARDWARE/WIRING IS SHOWN

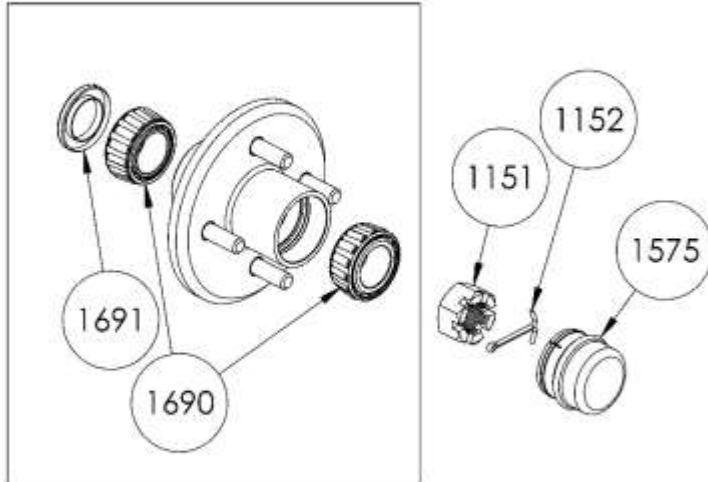
# BT-MGCA PARTS REFERENCE OSCILLATION ASSEMBLY (BEGINNING W/SERIAL #44404)



\* ALL HARDWARE NOT SHOWN

# BT-MGC4 SUB ASSEMBLIES PARTS REFERENCE

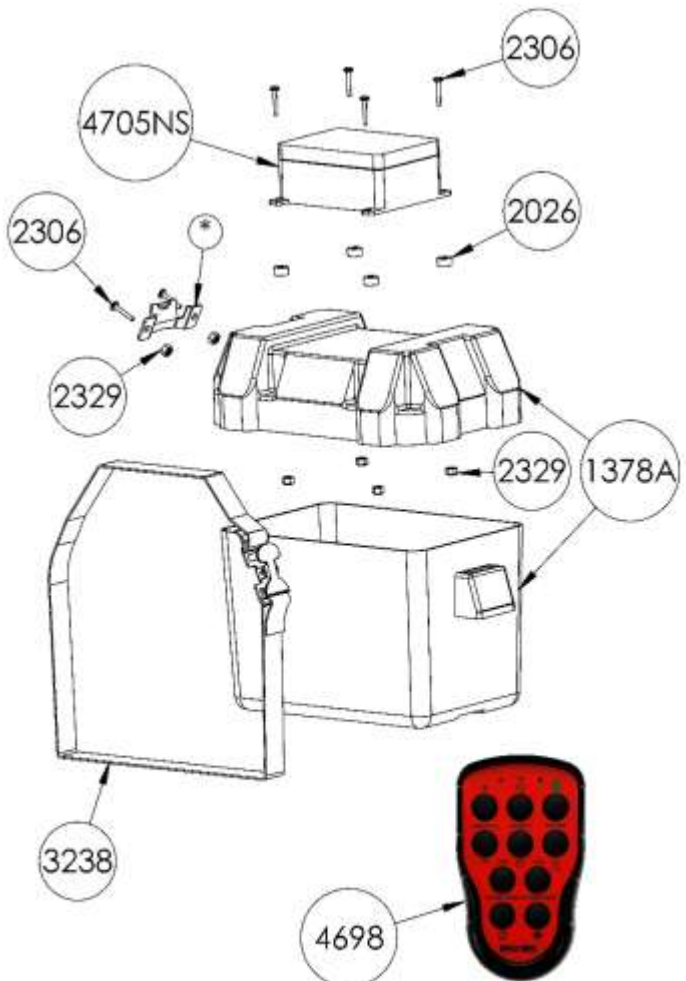
## PN 1153 (HUB W/ STUD RISERS) REPLACEMENT PARTS



HUB ASSEMBLY PARTS REFERENCE		
Part #	Description	Qty.
1151	1"-14 CASTLE NUT	1
1152	1/8 X 1-1/2" COTTER PIN	1
1575	BEARING CAP	1
1690	1-1/16 TAPER ROLLER BEARING	2
1691	SEAL	1

## 4706NS: BATTERY BOX PARTS REFERENCE

Part #	Description	Qty.
1378A	SMALL BATTERY BOX	1
2026	SPACER	4
2306	8-32 X 7/8" PHILLIPS PAN HEAD	6
2329	8-32 NYLOC NUT	6
3238	BATTERY BOX STRAP	1
4698	WIRELESS TRANSMITTER	1
4705NS	UNIVERSAL WIRELESS RECEIVER W/O SENSORS	1



### NOTE:

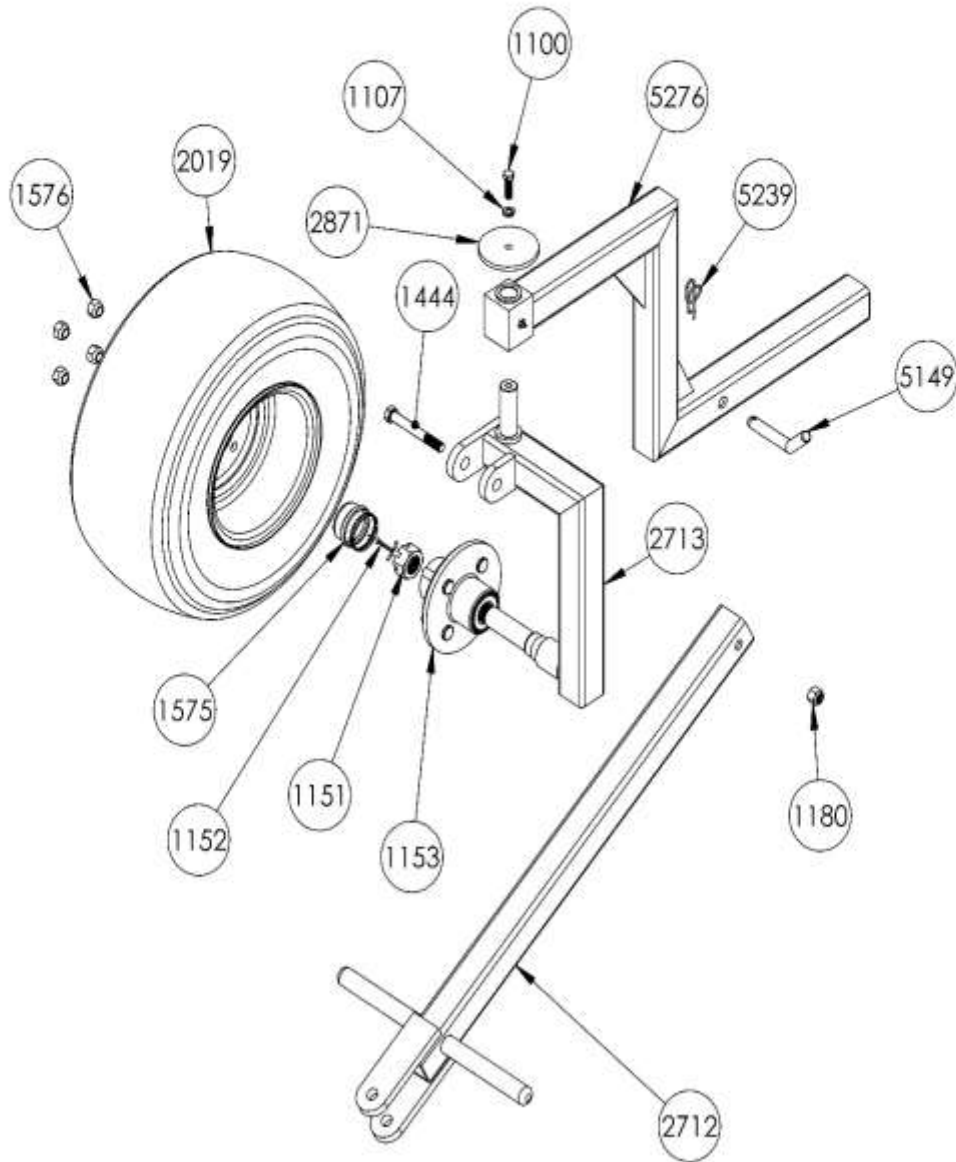
THE FOLLOWING PARTS ARE NOT SHOWN:

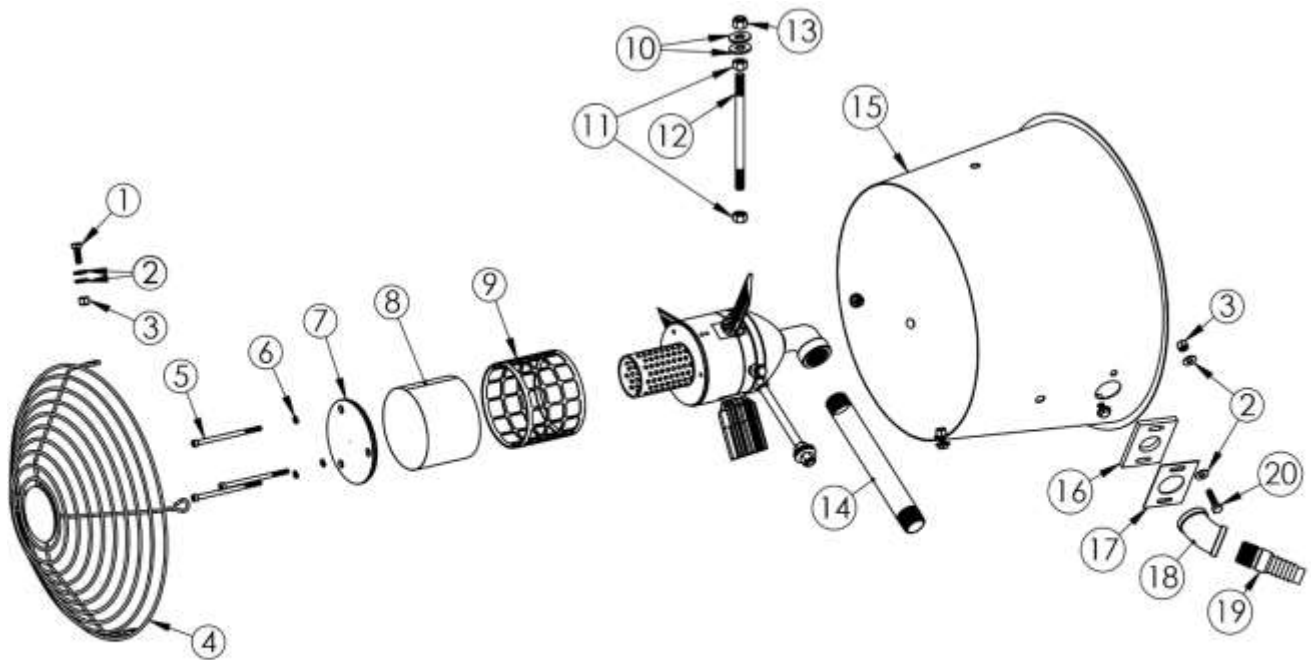
PART 4699 - WIRING HARNESS  
QTY = 1

\* - PART INCLUDED IN PART# 4699.

# BT-MGC4 SUB ASSEMBLIES PARTS REFERENCE CONT.

## PART #5275: 3RD WHEEL ASSEMBLY





**Oscillation Gyrotory Atomizing Nozzle (Part #3517) Parts Reference**

Ref #	Part #	Description	Qty.
1	1258	1/4-20 X 3/4 HHCS GR5 ZINC	4
2	1415	1/4" FLAT WASHER	12
3	1125	1/4-20 NYLOC NUT ZINC	6
4	2881	MONSOON NOZZLE GUARD	1
5	2663	10-32 X 3 1/2" LONG STAINLESS STEEL SHCS	3
6	2664	10-32 STAINLESS STEEL SPLIT LOCK WASHER	3
7	2574	CAGE END CAP, MONSOON	1
8	2711	SCREEN, STAINLESS MONSOON	1
9	2605	SCREEN CAGE, MONSOON ATOMIZER	1
10	1108	3/8 FLAT WASHER ZINC PLATED	6
11	1105	3/8-24 HEX NUT ZINC PLATED GRADE 5	6
12	2592	3/8" X 5.7" LONG SUPPORT ROD, MONSOON	3
13	1935	3/8-24 NYLOC NUT	3
14	2676	3/4" X 8" NIPPLE	1
15	2665	MONSOON NOZZLE	1
16	2678	RUBBER RETAINING GASKET, MONSOON	1
17	2679	GASKET RETAINER STAINLESS, MONSOON	1
18	3516	45 DEGREE 3/4" GALVANIZED STEEL ELBOW	1
19	3515	BARBED HOSE FITTING, 3/4" HOSE, 3/4" MALE NPT, ZINC PLATED	1
20	1169	1/4-20 X 1 HHCS ZINC	2

**PLEASE CONTACT BUFFALO TURBINE AT 716-592-2700  
BEFORE ATTEMPTING TO SERVICE GYRATORY ATOMIZING NOZZLE.**

## BILL OF MATERIALS FOR BT-MGC4

REF PAGE #	PN	DESCRIPTION	QTY
20	1100	3/8-24 X 1-1/4 HHCS ZINC GR 5	1
20	1107	3/8 LOCK WASHER ZINC PLATED	1
17	1119	BELLMOUTH	1
	1121	BLACK GRD. CABLE W/ LUGS	1
	1122	RED POS. CABLE W/ LUGS	1
	1123	M8 X 1.25 X 20MM LONG HHCS PLATE	1
	1125	1/4-20 NYLOC NUT ZINC	2
	1132	300 CCA BATTERY FOR KB	1
18	1141	ELBOW BASE, SHORT	1
18	1142	AX54 V-BELT	1
17	1150	SMALL WHITE PLASTIC FENDER	2
19, 20	1151	1"-14 CASTLE NUT	1
19, 20	1152	1/8 X 1-1/2" COTTER PIN	1
19, 20	1153	HUB WITH STUDS, RACES, AND GREASED BEARINGS INSTALLED	1
17	1154	3/8-16 X 1 CARRIAGE BOLT	8
17	1156R	Aluminum Serial Tag Blank	1
	1158	FUEL LINE SAE30R7, 1/4" LOW PERMEATION	132.5"
	1166	COV 1/2 X 1/4 WIRE CLAMP	1
	1169	1/4-20 X 1 HHCS ZINC	4
18	1171	ELBOW SEGMENT	1
18	1173	CLAMP BAND W/ BOLT & NUT	6
20	1180	1/2-13 NYLOC NUT ZINC	1
	1181	QUART OF OIL PITT PENN 10W30	1.5
	1186	CAUTION DO NOT OPERATE DECAL	1
	1233	AMERICA & SAFETY FIRST DECAL	1
	1258	1/4-20 X 3/4 HHCS GR5 ZINC	2
	1259	1/4 LOCK WASHER, ZINC	4
	1275	BLACK CABLE TIES 8"	11
	1415	1/4" FLAT WASHER	4
20	1444	1/2-13 X 4 HHCS GR. 5 ZINC PLATED	1
19, 20	1575	BEARING CAP FOR HUB	1
17, 20	1576	1/2-20 LUG NUT	12
18	1681	HEAVY GAUGE ELBOW	2
17	1746	MOREFLEX COUPLING KIT, KOHLER	1
	1784	120 db POWER LEVEL FOR CE	1
18	1803	TIMING BELT ELBOW BASE RING	1
18	1804	3/8"X 3/4" 44 TOOTH PULLEY	1
18	1805	3/8" X 3/4" TIMING BELT 160 TEETH	1
	1980	1/4-20 X 3/4" LONG SOCKET SET SCREW	2
17, 20	2019	18" X 8 1/2" X 8" 4PLY TIRE	3
	2639	SBR RUBBER GROMMET, 5/8" BORE	2
20	2712	TOW BAR / HANDLE, OS	1
20	2713	WHEEL BRACKET, OS	1
20	2871	3-1/2" OD WASHER	1
	2874	RUBBER WHEEL CHOCK	2
	2987	CE LABEL KIT, DIESEL MONSOON	1
	3007	CONSTANT TENSION HOSE CLAMP	3
	3062	EPA EMISSIONS LABEL	1
	3067	DATE LABEL, EPA STICKERS	1
18	3141	BELT GUARD FRONT	1
18	3142	BELT GUARD BACK	1
18	3269	3" HEAVY DUTY EXTENSION	2
18	3271	LONG THROAT ROTATION SHEAVE	1
17	3314	EPA APPROVED FUEL CAP	1
	3384	NYLON SELF-RETAINING WASHER	10
18	3425	OSCILLATION GUARD	1
18	3426	OSCILLATION GUARD W/ SLOT	1
18	3501	SMALL OSCILLATION MOTOR, RUBBER DIPPED	1
18	3502	LIMIT SWITCH ASSEMBLY	1
18	3504	LARGE RUBBER DIPPED MOTOR	1
18	3513	OSCILLATION EYE ASSEMBLY	1
18, 21	3517	OSCILLATION MONSOON NOZZLE	1
	3667	HOUR METER, 1:2 RATIO	1
18	4087	WIRING HARNESS, OSCILLATION MONSOON	1
	4548	PROP 65 LABEL, 2" X 2"	1

18	4620	3/4" ID x 1" OD REINFORCED PVC TUBE	64"
18	4651	HOSE CLAMP No. 10	2
17	4704	26.5 HP EFI Engine	1
17	4706NS	CKB6 BATTERY BOX ASSY	1
	4725	Combined Warning Decal	1
	4792	5/16-18 x 3/4" Serrated Flange Head Bolt, Zinc	12
	4797	3/8-16 x 3/4" Long Serrated Flange Head Bolt, Zinc	2
	4798	3/8-16 x 1" Long Serrated Flange Head Bolt, Zinc	16
	4799	3/8-16 x 1-3/4" Long Serrated Flange Head Bolt, Zi	12
	4801	3/8-16 Serrated Flange Hex Nut	36
	4808	1/4-20 x 3/4" Long Serrated Flange Head Bolt; Zing	8
	4810	1/4-20 HEX NUT WITH SERRATED FLANGE, ZINC PLATED	4
17	4875	8 GALLON TOP DRAW FUEL TANK	1
17	4942	8 GALLON TANK FUEL TANK STRAP	2
	5024	Oil Drain Valve	1
	5029	Oil Drain Hose	1
	5056	1/8" DIA steel rivets	2
17	5126	EFI Guard	1
17	5145	Fender Bracket - Bolt On	4
17	5144	Engine Rail - CKB7	2
20	5149	5/8 x 3" Bent Hitch Pin	1
	5150	3/8-18 NPT Oil Drain Adapter	1
	5151	4.24"x8.00" Cyclone Decal	1
	5156	Cyclone 7 Sheet Metal Frame Weldment	1
	5164	3/8-16 x 1-1/4 Long Serrated Flange Head Bolt	6
17	5237	BOLT IN AXLE AND HUB ASSEMBLY	2
20	5239	Locking Cotter Pin; 0.105 dia. Wire; Clear Zinc	1
	5259	KB7 HARDWARE KIT	1
20	5276	THIRD WHEEL BRACKET ASSY.	1
18	5784	SUPPORT MOUNT FOR BRACES - SHORT TURBINE	1
18	5785	GEAR MOTOR MOUNT BRACE - SHORT TURBINE	2
18	5787	ROTATION MOTOR COVER	1
17	5824S	SHORT, NIPPED, RED, R.H. 14" BLOWER W/O SENSORS	1
18	5825	PLASTIC SLIDE MODIFIED - A	2
18	5826	PLASTIC SLIDE MODIFIED - B	2

# BUFFALO TURBINE WIRELESS REMOTE SYSTEM MANUAL FOR BT-MGC4

## Specifications:

### Receiver

(BT PN 4705NS) WIRELESS RECEIVER

### Transmitter

(BT PN 4698) WIRELESS TRANSMITTER 10 BUTTON

### Environmental

Supply Voltage: 12VDC

Signal Analog Voltage Ramp (V/Sec): 10/6

Signal Analog Ramp Range (V): 0-10 increase & 10 - 0 decrease

Functional Relays: functional relays makes/ breaks 8A ACI

Transmit Frequency: 2405-2480 MHz

Number of Freq. Channels: 16

IP Class: IP65

Battery Type: 3 x 1.5 V - AAA alkaline

Operating Time: Approx. 15 h. with continuous usage

### Operation

Operation of the controlled device is performed with the Nozzle and Throttle buttons on the transmitter. The Nozzle buttons are used to rotate the Nozzle clock (⌚) wise or counter clock wise (⌚). The Throttle buttons (+) increase and (-) decrease the engines throttle.

- Analog Signal Ramp Range (DCV): 0 to 5 increase (+) / 5 to 0 decrease (-)
- Releasing the + or - buttons at any time during an increase/decrease command will result in the control voltage to remain at a proportional value between 0 and 10 volts.
- At any time the operator can press both + and - buttons simultaneously to return the variable output to 0 volts resulting in the engine's throttle be set back to low idle.

### Pairing Transmitter (TX) to Receiver (RX)

This procedure should be used to pair a single transmitter to the receiver. Multiple transmitters cannot be paired at the same time to this Receiver (contact Buffalo Turbine at 716-592-2700 for assistance).

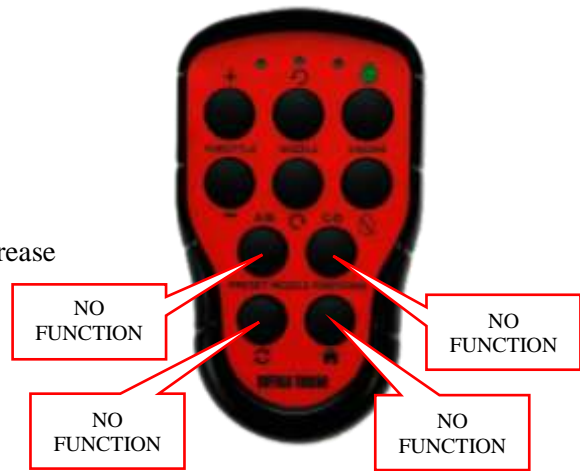
The following steps will completely erase any previously stored transmitter out of the receiver's memory making them obsolete. You have 10 seconds to complete these procedures after turning the engine key switch to the run position.

1. Verify that the transmitter has a green light when each individual button is pressed.
2. Engine key switch should be in the "OFF" position.
3. Switch on the back of the Transmitter needs to be in "ON" Position.
4. Firmly press and hold transmitter buttons Throttle +, Throttle -, and Nozzle 1 CCW (⌚) simultaneously.
5. While holding down the three buttons, turn the engine key switch ON, supplying power to receiver.
6. Keep holding down these three buttons for 6-10 seconds in which time the nozzle should start to move.
7. Pairing has been successfully completed.

If a valid code from an already registered TX is received, the receiver will go directly into normal operating mode. This is to speed up the startup time.

**NOTE: Breaking any warranty seal will void the equipment's warranty, consult with Buffalo Turbine at 716-592-2700 before proceeding.**

**NOTE: Bottom 4 buttons do not have any function (as shown above) with this system.**



## BATTERIES

BATTERY TYPE: 2 x 1.5 V

AAA alkaline

OPERATING TIME: Approx. 15 h. with continuous usage

WARNING! Do not recharge! Attempts to recharge may cause rupture, or the leaking of hazardous liquids which will corrode the equipment.

## CHANGE THE BATTERIES

1. Loosen 5 transmitter housing screws and open housing
2. Remove the batteries.
3. Put the new batteries in (2 x 1.5V AAA batteries).
4. Assemble transmitter housing and tighten 5 housing screws.

## BATTERY PRECAUTIONS

Observe the following warnings.

- As batteries contain flammable substances such as lithium or other organic solvents, they may cause heating, rupture or ignition.
  - Risk of explosion if battery is replaced with a battery of an incorrect type.
  - Do not short circuit, disassemble, deform or heat batteries.
  - Never try to charge a visibly damaged or frozen battery.
  - Do not charge rechargeable batteries with a higher voltage than specified.
  - Keep batteries out of reach of small children. Should a child swallow a battery, consult a physician immediately.
  - Avoid direct soldering to batteries.
  - When discarding batteries, insulate the + and - terminals of batteries with insulating/ masking tape. Do not put multiple batteries in the same plastic bag.
  - When improperly disposed, lithium batteries may short circuit, causing them to become hot, burst or ignite.
  - Store in a cool location. Keep batteries away from direct sunlight, high temperature, and high humidity.
  - Do not throw batteries into fire.

## DISPOSAL OF BATTERIES AND ELECTRONICS

An alkaline battery does not contain mercury, cadmium or lead, and is better for the environment than older types of batteries. Alkaline batteries should be disposed through local recycling stations/waste dumps. Contact your local government's recycling or solid waste department for more information on proper recycling of alkaline batteries in your region.

Improperly disposed batteries and electronics may harm public health and the environment. Batteries and electronic waste may contain toxic heavy metals. If thrown away in the trash, the toxic compounds can leach into soil and water, pollute lakes and streams, making them unfit for drinking, swimming, fishing, and wildlife. Contact your local government's recycling or solid waste department for more information on proper disposal of batteries and electronics in your region.

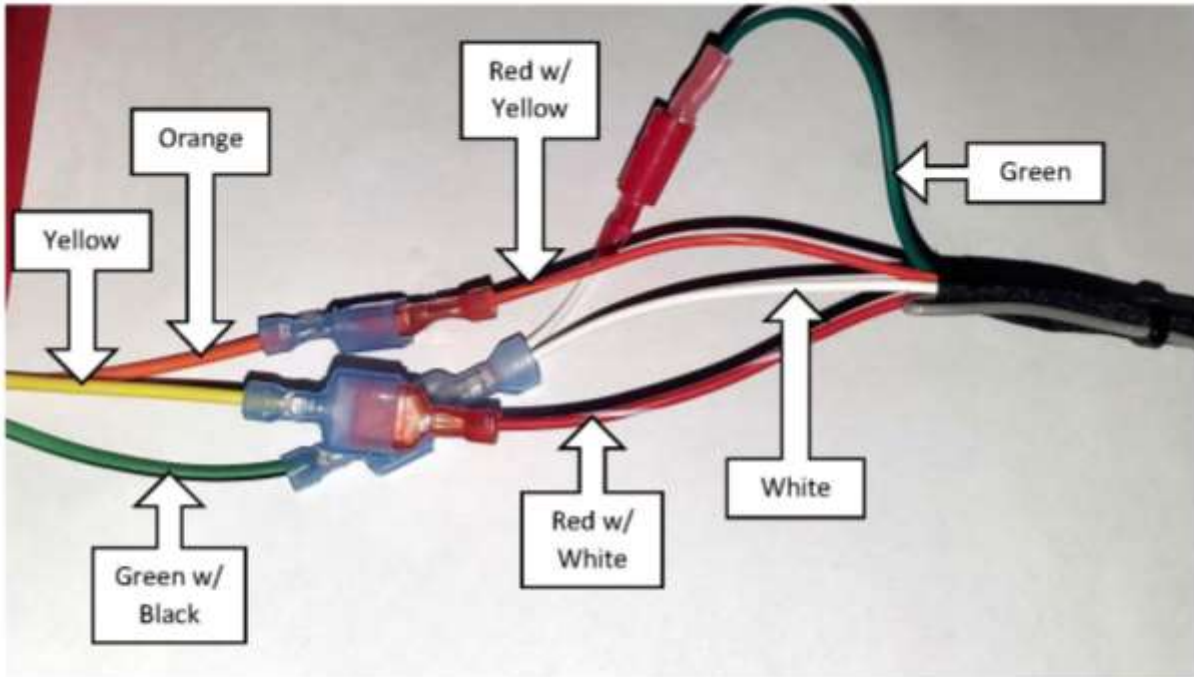
## GUARANTEE, SERVICE, REPAIRS AND MAINTENANCE FOR WIRELESS SYSTEM

Buffalo Turbine products are covered by a guarantee against material, construction and manufacturing faults. During the guarantee period, Buffalo Turbine may replace the product or faulty parts. Work under guarantee must be authorized by Buffalo Turbine.

The following is not covered by the guarantee: Faults resulting from normal wear and tear, parts of a consumable nature, any Product that has been subject to unauthorized modifications, any faults resulting from incorrect installation or use, and any failure due to damp and/or water damage.

Repairs and maintenance must be authorized by Buffalo Turbine. Use spare parts from Buffalo Turbine only. Contact Buffalo Turbine at 716-592-2700 if you require service or other assistance. Keep the product in a dry, clean place. Keep contacts and antennas clean. Wipe off dust using a slightly damp, clean cloth. Never use cleaning solutions or high-pressure water.

## Wire Identification on BT-MGC4



- Yellow - Power to Receiver
- Orange - Throttle Output from Receiver
- Red w/ Yellow - Throttle Input to Engine
- Green - Oil Pressure Switch
- Green w/ Black - Engine Kill
- Red w/ White - Power from Key Switch
- White - Ground Kill Coil



- Blue - Engine Start (from Starter)
- Blue w/ White - Engine Start (Receiver to Relay)

## Starting the Engine Manually with the Key Switch

In addition to remote start/stop via the wireless transmitter, the debris blower can also be started manually using the key switch located on the front of the engine.

To enable manual starting, locate the fuse box on the left side of the engine. It is a black plastic box with wires coming out the bottom. Depress the tabs on both sides of the fuse box cover, and remove the cover from the fuse box.

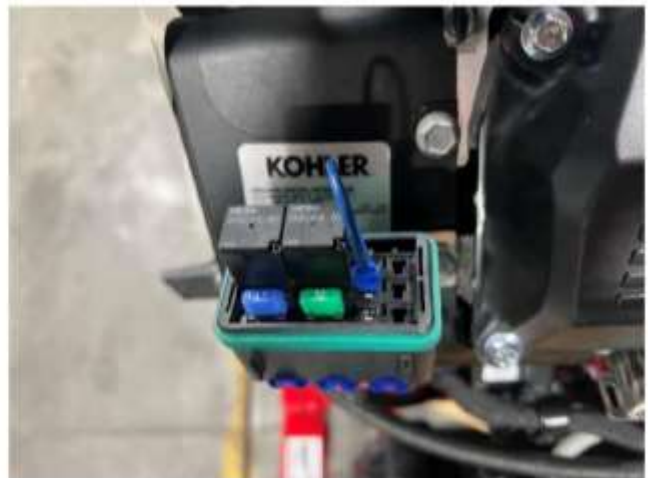
Inside the fuse box, a blue wire with a spade connector on the end comes out of a terminal at the back of the fuse box, and the spade connector is installed in the first terminal, as shown in Image 1 below. Remove the spade connector from the first terminal and insert it into the second terminal, as shown in Image 2. The engine can now be started manually using the key switch.

To re-enable remote start/stop functionality, remove the spade connector from the second terminal and reinstall into the first terminal, as shown in Image 1.

Reinstall the fuse box cover before operating the debris blower.



*Image 1 - Remote Start*

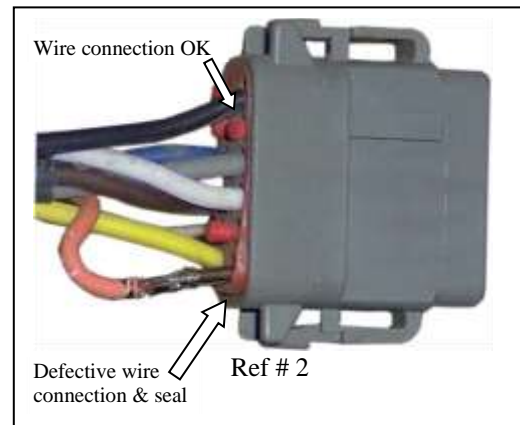
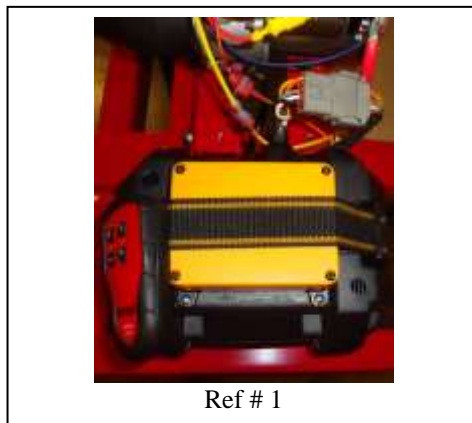


*Image 2 - Manual Start*

# TROUBLESHOOTING FOR MGC4 REMOTE / RECEIVER

## SYMPTOM – DOES NOT THROTTLE UP PROPERLY.

1. Disconnect grey plug connected to the receiver. Grey plug must be removed by compressing the side tabs and pulling straight out as shown in Ref #1. Check to ensure that each wire is securely attached to the grey connector plug (see Ref #2). Ref # 2 shows a defective grey plug.
  - If wires will not pull out of the grey connector plug, reattach connector plug to the receiver and proceed to step 2.
  - If wire(s) pull out of connector plug, wire harness needs to be replaced. (see Ref # 2)



2. Check Remote Transmitter by pressing each button to ensure that the light on Transmitter has a green light.

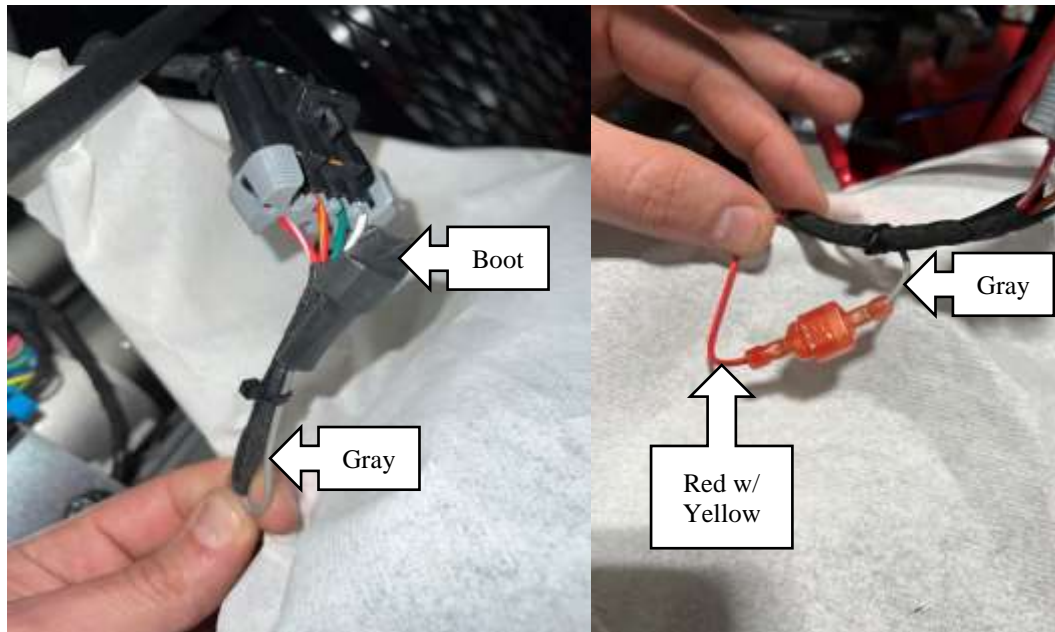
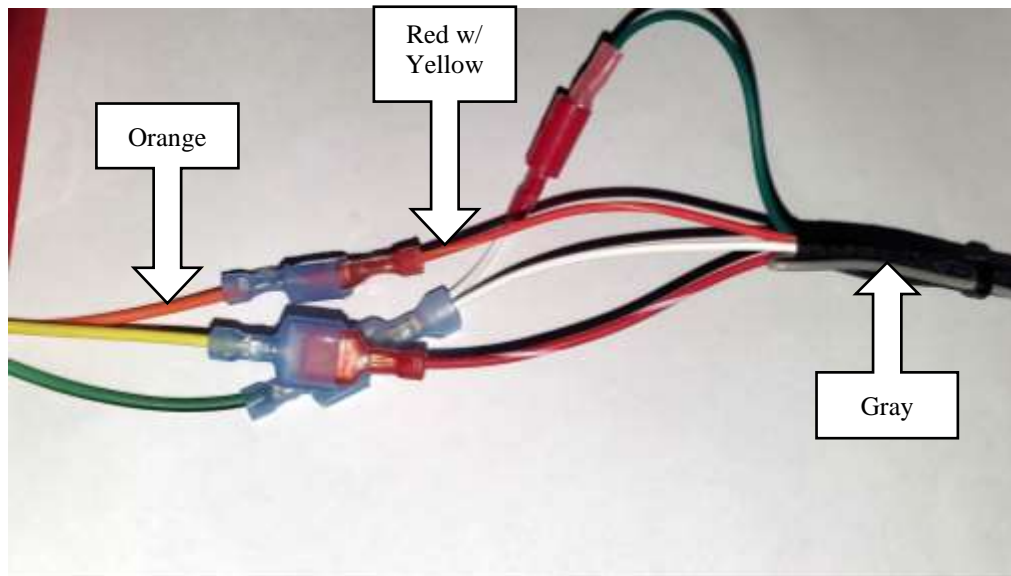


- If the LED lights do not appear when pressing each button on the transmitter, verify switch on back of transmitter is turned on and/or replace transmitter batteries. If the LED lights still fail to function after replacing the batteries, replace the transmitter.
- If the lights functions correctly, proceed to step #3

### 3. THROTTLE CONTROL JUMP TEST FOR ENGINE

To conduct the throttle jump test:

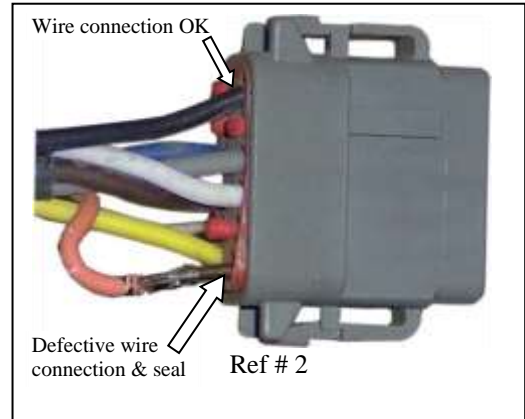
- A. Disconnect the orange wire from the red wire with the yellow stripe
- B. Locate the unused gray wire that is folded back and wire-tied to the harness loom, and remove the boot covering the terminal on the end of the gray wire
- C. Start the engine (engine should idle at approximately 1500 RPM)
- D. Connect the red wire with the yellow stripe to the terminal on the end of the gray wire (engine should accelerate to approximately 3900 RPM)



- If the engine does not go to full throttle, contact a Kohler repair authorized Buffalo Turbine Representative.
- If the engine goes to full throttle, contact Buffalo Turbine at 716-592-2700.

## TROUBLESHOOTING FOR MGC4 REMOTE / RECEIVER SYMPTOM: NOZZLE WILL NOT ROTATE PROPERLY

1. Disconnect grey plug connected to the receiver. Grey plug must be removed by compressing the side tabs and pulling straight out as shown in Ref #1. Check to ensure that each wire is securely attached to the grey connector plug (see Ref #2). Ref # 2 shows a defective grey plug.
  - If wires will not pull out of the grey connector plug, reattach connector plug to the receiver and proceed to step 2.
  - If wire(s) pull out of connector plug, wire harness needs to be replaced.(see ref # 2)



2. Check Remote Transmitter by pressing each button to ensure that the light on Transmitter has a green light.



- If the LED lights do not appear when pressing each button on the transmitter, verify switch on back of transmitter is turned on and/or replace transmitter batteries. If a LED lights still fail to function after replacing the batteries, replace the transmitter.
  - If the lights functions correctly, proceed to step #3
3. Check the set screw on the rotation motor pulley to make sure pulley is not loose and spinning on the shaft.
    - If set screw is loose, rotate nozzle assembly until pulley and flat spot on shaft are aligned. Tighten set screw and test nozzle functions with remote.
    - If set screw is tight, proceed to step #4

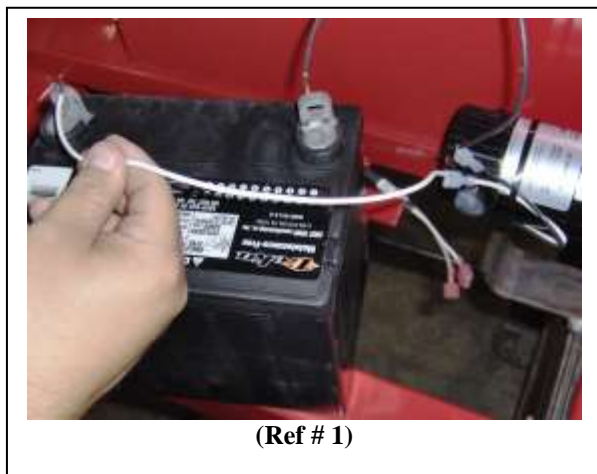
4. With the engine key switch in the run position, disconnect the nozzle wires leading from the rotation motor and wire harness (white and grey) at the quick disconnects. The following test will require an electronic multi-meter, set to read at least 12 volts.

- Insert the red probe into the white wire and black probe into the grey wire. Press the nozzle buttons CW or CCW. (Voltage should read approx. +12 volts in one direction and approx. – 12 volts in the opposite direction.) If the proper voltage is confirmed and all wire connections are secure, proceed to step # 5

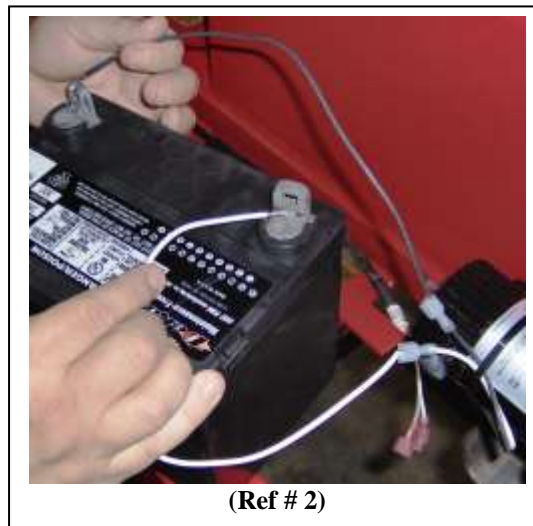


- If proper voltage has not been verified contact Buffalo Turbine for further instructions.

5. Apply power to the rotation motor directly. Both wires from rotation motor need to be connected to the battery. (Ex. white to positive terminal & black to negative terminal) Then reverse the wire connections to the battery. (Ex. black to positive terminal & white to negative terminal)



(Ref # 1)



(Ref # 2)

- If rotation motor rotates in both directions, the motor is ok.
- If rotation motor will not rotate in either direction with power applied contact Buffalo Turbine.
- If rotation motor rotates in one direction but the other, contact Buffalo Turbine.

**If necessary, contact Buffalo Turbine at 716-592-2700 for more instructions**



# OPTIONS

 180 Zoar Valley Road  
 Springville, NY 14141

## NOZZLES +

Aerospace Polymer Nozzle - Part# 2851


**Flexible Nozzle Assembly - Part# 3345**  
 Various lengths available.  
 Ideal for rough terrain.


\*Call sales and service to request custom nozzle configuration.


**Gyratory Atomizing Nozzle - Part# 2547**  
 (Safety guard removed for clarity)

 Optional aluminum nozzles **will not** connect to the standard Aerospace Polymer Nozzle (Part# 2851). Requires: **Two 45° elbow segments (Part# 1171)** and two additional clamp bands (Part# 1173).

**12" Extension - Part# 1468**  
**20" Extension - Part# 1845**
**10" Round Nozzle - Part# 1417**  
**12" Round Nozzle - Part# 1172**  
 Improves air velocity with lower horsepower and hydraulic blower units

**10" Rectangular Nozzle - Part# 1469**  
**19" Rectangular Nozzle - Part# 1425**  
 5.5"x15" opening - extra length/more concentrated air flow. Uses - heavy wet debris, plugs, top dressing. No ground clearance in the vertical down position.

**Fishtail Nozzle - Part# 1743**  
 5"x30" (wide angle) opening. Distributes a large volume of air at a lower velocity over a wide area. Easily converts blower into a "Greens Fan". Adaptable to all models. Not as effective at moving debris.


<b>D.O.T. TRAILER</b> <b>Part# 1613-D</b> for 8000, KB4, EFI & Mega 	<b>2" BALL RECEIVER HITCH</b> <b>Part# 4605</b> 	<b>FORK POCKETS</b> <b>Part# 4552</b> Great for moving blowers around jobsites and bed mount / skid mount applications. 	<b>LINE DRIVER ATTACHMENT</b> <b>Part# 2419</b> 
<b>CORDED CONTROL</b> <b>Part# 5579</b> for KB7, MEGA 3 Model <b>Part# 2787</b> for Diesel Model <b>Part #5580</b> for Squared Model 	<b>CLAMP BAND W/ BOLT &amp; NUT</b> <b>Part# 1173</b> 	<b>QUICK CONNECT CLAMP BAND</b> <b>Part# 4935</b> Quickly remove or add nozzle with the barrel style clamp band. 	 <b>WARNING:</b> Cancer & Reproductive Harm - <a href="http://www.P65Warnings.ca.gov">www.P65Warnings.ca.gov</a>

# BUFFALO TURBINE PRODUCTS

**Cyclone eKB**



**Cyclone 8000 (& 8000 EFI)**



**Cyclone KB7**



**Cyclone MEGA**



The Original &  
**Most Powerful**  
Turbine Debris  
Blowers  
since 1945



**BLITZ (& BLITZ MEGA)**



**Cyclone SQUARED**



**Cyclone Hydraulic (& Hydraulic MEGA)**



**Cyclone PTO (& PTO MEGA)**

Visit [BuffaloTurbine.com](http://BuffaloTurbine.com) for more product info